

**ENOPH1 antibody - N-terminal region**  
**Rabbit Polyclonal Antibody**  
**Catalog # AI14140**

**Specification**

**ENOPH1 antibody - N-terminal region - Product Information**

Application	<b>WB</b>
Primary Accession	<a href="#">Q9UHY7</a>
Other Accession	<a href="#">NM_021204</a> , <a href="#">NP_067027</a>
Reactivity	<b>Human, Mouse, Rat, Rabbit, Pig, Horse, Bovine, Guinea Pig, Dog</b>
Predicted	<b>Human, Pig, Guinea Pig, Dog</b>
Host	<b>Rabbit</b>
Clonality	<b>Polyclonal</b>
Calculated MW	<b>29kDa KDa</b>

**ENOPH1 antibody - N-terminal region - Additional Information**

**Gene ID 58478**

Alias Symbol **DKFZp586M0524, E1, FLJ12594, MASA, MST145**

**Other Names**

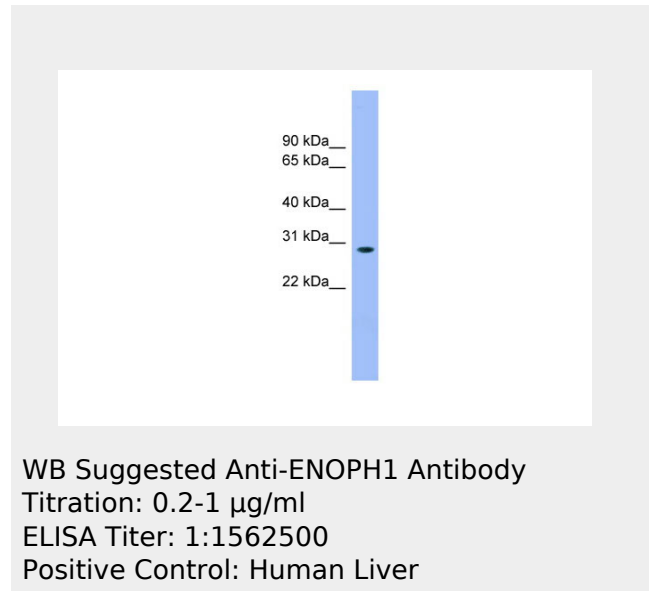
Enolase-phosphatase E1  
{ECO:0000255|HAMAP-Rule:MF\_03117}, 3.1.3.77  
{ECO:0000255|HAMAP-Rule:MF\_03117}, 2, 3-diketo-5-methylthio-1-phosphopentane phosphatase  
{ECO:0000255|HAMAP-Rule:MF\_03117}, MASA homolog  
{ECO:0000255|HAMAP-Rule:MF\_03117}, ENOPH1  
{ECO:0000255|HAMAP-Rule:MF\_03117}

**Format**

Liquid. Purified antibody supplied in 1x PBS buffer with 0.09% (w/v) sodium azide and 2% sucrose.

**Reconstitution & Storage**

Add 50 ul of distilled water. Final anti-ENOPH1 antibody concentration is 1 mg/ml in PBS buffer with 2% sucrose. For



**ENOPH1 antibody - N-terminal region - References**

Hu R.-M., et al. Proc. Natl. Acad. Sci. U.S.A. 97:9543-9548(2000).  
Ota T., et al. Nat. Genet. 36:40-45(2004).  
Ebert L., et al. Submitted (JUN-2004) to the EMBL/GenBank/DDBJ databases.  
Qin B.M., et al. Submitted (AUG-1999) to the EMBL/GenBank/DDBJ databases.  
Burkard T.R., et al. BMC Syst. Biol. 5:17-17(2011).

longer periods of storage, store at 20°C.  
Avoid repeat freeze-thaw cycles.

**Precautions**

ENOPH1 antibody - N-terminal region is for research use only and not for use in diagnostic or therapeutic procedures.

**ENOPH1 antibody - N-terminal region - Protein Information****Name** ENOPH1

{ECO:0000255|HAMAP-Rule:MF\_03117}

**Function**

Bifunctional enzyme that catalyzes the enolization of 2,3-diketo-5-methylthiopentyl-1-phosphate (DK-MTP-1-P) into the intermediate 2-hydroxy-3-keto-5-methylthiopentenyl-1-phosphate (HK-MTPenyl-1-P), which is then dephosphorylated to form the acireductone 1,2-dihydroxy-3-keto-5-methylthiopentene (DHK-MTPene).

**Cellular Location**

Cytoplasm

{ECO:0000255|HAMAP-Rule:MF\_03117}.

Nucleus

{ECO:0000255|HAMAP-Rule:MF\_03117}

**ENOPH1 antibody - N-terminal region - Protocols**

Provided below are standard protocols that you may find useful for product applications.

- [Western Blot](#)
- [Blocking Peptides](#)
- [Dot Blot](#)
- [Immunohistochemistry](#)
- [Immunofluorescence](#)
- [Immunoprecipitation](#)
- [Flow Cytometry](#)
- [Cell Culture](#)