

WDR35 antibody - N-terminal region
Rabbit Polyclonal Antibody
Catalog # AI14122

Specification

WDR35 antibody - N-terminal region - Product Information

Application	WB
Primary Accession	Q9P2L0-2
Other Accession	NM_020779 , NP_065830
Reactivity	Human, Mouse, Rat, Rabbit, Pig, Horse, Guinea Pig, Dog
Predicted	Human, Mouse, Rat, Rabbit, Pig, Chicken, Guinea Pig, Dog
Host	Rabbit
Clonality	Polyclonal
Calculated MW	132kDa KDa

WDR35 antibody - N-terminal region - Additional Information

Alias Symbol **KIAA1336, MGC33196, CED2**

Format

Liquid. Purified antibody supplied in 1x PBS buffer with 0.09% (w/v) sodium azide and 2% sucrose.

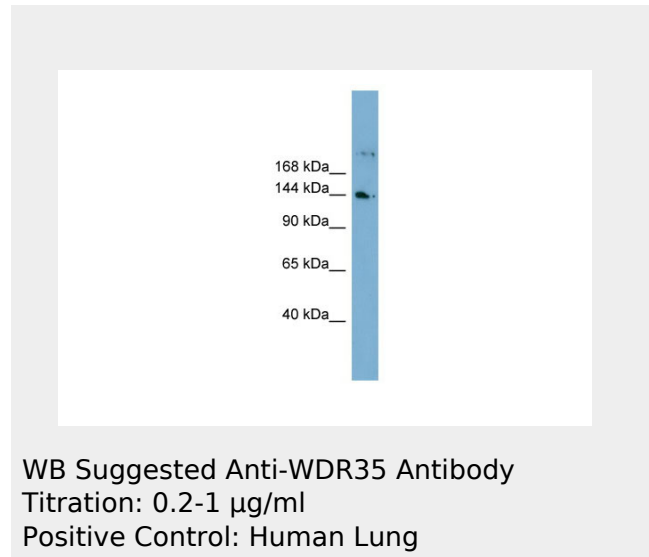
Reconstitution & Storage

Add 50 ul of distilled water. Final anti-WDR35 antibody concentration is 1 mg/ml in PBS buffer with 2% sucrose. For longer periods of storage, store at 20°C. Avoid repeat freeze-thaw cycles.

Precautions

WDR35 antibody - N-terminal region is for research use only and not for use in diagnostic or therapeutic procedures.

WDR35 antibody - N-terminal region - Protein Information



**WDR35 antibody - N-terminal region -
Protocols**

Provided below are standard protocols that you may find useful for product applications.

- [Western Blot](#)
- [Blocking Peptides](#)
- [Dot Blot](#)
- [Immunohistochemistry](#)
- [Immunofluorescence](#)
- [Immunoprecipitation](#)
- [Flow Cytometry](#)
- [Cell Culture](#)