

HP1BP3 antibody - N-terminal region
Rabbit Polyclonal Antibody
Catalog # AI14023

Specification

HP1BP3 antibody - N-terminal region - Product Information

Application	WB
Primary Accession	Q5SSJ5
Other Accession	NM_016287 , NP_057371
Reactivity	Human, Mouse, Rat, Rabbit, Pig, Horse, Bovine, Guinea Pig, Dog
Predicted	Human, Mouse, Rat, Rabbit, Pig, Horse, Dog
Host	Rabbit
Clonality	Polyclonal
Calculated MW	61kDa KDa

HP1BP3 antibody - N-terminal region - Additional Information

Gene ID 50809

Alias Symbol **HP1-BP74, MGC43701, RP5-930J4.3**

Other Names

Heterochromatin protein 1-binding protein 3, Protein HP1-BP74, HP1BP3

Format

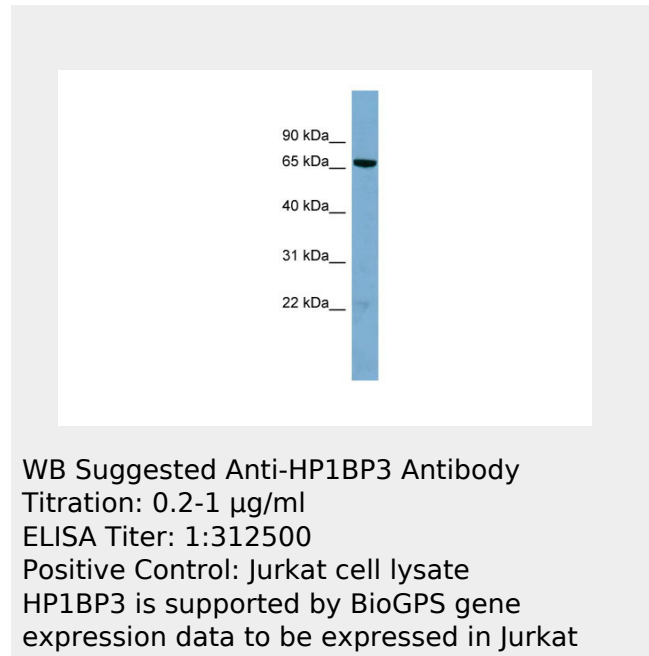
Liquid. Purified antibody supplied in 1x PBS buffer with 0.09% (w/v) sodium azide and 2% sucrose.

Reconstitution & Storage

Add 50 ul of distilled water. Final anti-HP1BP3 antibody concentration is 1 mg/ml in PBS buffer with 2% sucrose. For longer periods of storage, store at 20°C. Avoid repeat freeze-thaw cycles.

Precautions

HP1BP3 antibody - N-terminal region is for research use only and not for use in diagnostic or therapeutic procedures.



HP1BP3 antibody - N-terminal region - References

Hu R.-M., et al. Proc. Natl. Acad. Sci. U.S.A. 97:9543-9548(2000).
Ota T., et al. Nat. Genet. 36:40-45(2004).
Bechtel S., et al. BMC Genomics 8:399-399(2007).
Gregory S.G., et al. Nature 441:315-321(2006).
Mural R.J., et al. Submitted (JUL-2005) to the EMBL/GenBank/DDBJ databases.

HP1BP3 antibody - N-terminal region - Protein Information**Name** HP1BP3**Function**

Component of heterochromatin that maintains heterochromatin integrity during G1/S progression and regulates the duration of G1 phase to critically influence cell proliferative capacity (PubMed:24830416). Mediates chromatin condensation during hypoxia, leading to increased tumor cell viability, radio-resistance, chemo- resistance and self-renewal(PubMed:25100860).

Cellular Location

Nucleus. Chromosome Note=localized in nuclei but not in nucleoli in interphase. Colocalized with chromosomes in mitosis, with a gradually increased during G1 progression and a maximum level during late G1 phase (G1/S)

HP1BP3 antibody - N-terminal region - Protocols

Provided below are standard protocols that you may find useful for product applications.

- [Western Blot](#)
- [Blocking Peptides](#)
- [Dot Blot](#)
- [Immunohistochemistry](#)
- [Immunofluorescence](#)
- [Immunoprecipitation](#)
- [Flow Cytometry](#)
- [Cell Culture](#)