

PRPSAP2 Antibody - N-terminal region
Rabbit Polyclonal Antibody
 Catalog # AI13945

Specification

PRPSAP2 Antibody - N-terminal region - Product Information

Application	WB
Primary Accession	O60256
Other Accession	NM_002767 , NP_002758
Reactivity	Human, Mouse, Rat, Rabbit, Pig, Horse, Bovine, Guinea Pig, Dog
Predicted	Human, Mouse, Pig, Chicken, Dog
Host	Rabbit
Clonality	Polyclonal
Calculated MW	41kDa KDa

PRPSAP2 Antibody - N-terminal region - Additional Information

Gene ID 5636

Alias Symbol **PAP41**

Other Names

Phosphoribosyl pyrophosphate synthase-associated protein 2, PRPP synthase-associated protein 2, 41 kDa phosphoribosypyrophosphate synthetase-associated protein, PAP41, PRPSAP2

Format

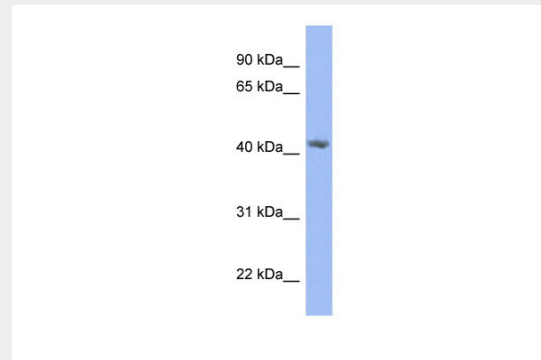
Liquid. Purified antibody supplied in 1x PBS buffer with 0.09% (w/v) sodium azide and 2% sucrose.

Reconstitution & Storage

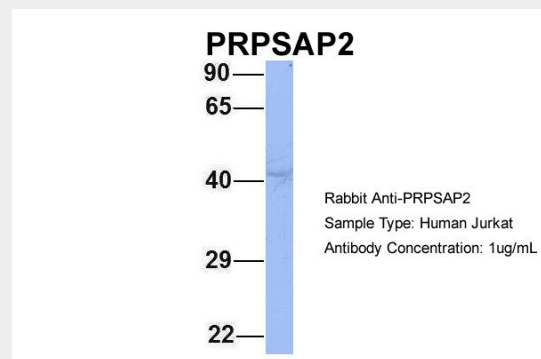
Add 50 ul of distilled water. Final anti-PRPSAP2 antibody concentration is 1 mg/ml in PBS buffer with 2% sucrose. For longer periods of storage, store at 20°C. Avoid repeat freeze-thaw cycles.

Precautions

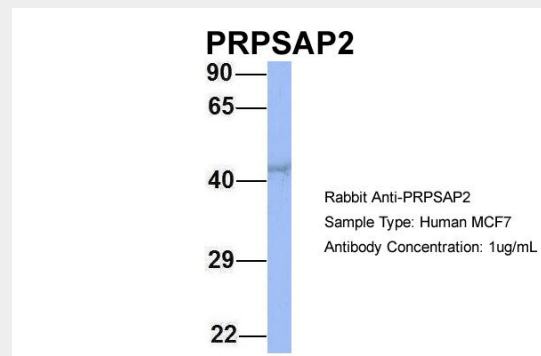
PRPSAP2 Antibody - N-terminal region is for research use only and not for use in diagnostic or therapeutic procedures.



WB Suggested Anti-PRPSAP2 Antibody Titration: 0.2-1 µg/ml
 ELISA Titer: 1:100
 Positive Control: HepG2 cell lysate



Host:Rabbit
 Target Name:PRPSAP2
 Sample Tissue:Jurkat
 Antibody Dilution: 1.0µg/ml PRPSAP2 is supported by BioGPS gene expression data to be expressed in Jurkat



PRPSAP2 Antibody - N-terminal region - Protein Information

Name PRPSAP2

Function

Seems to play a negative regulatory role in 5-phosphoribose 1-diphosphate synthesis.

Tissue Location

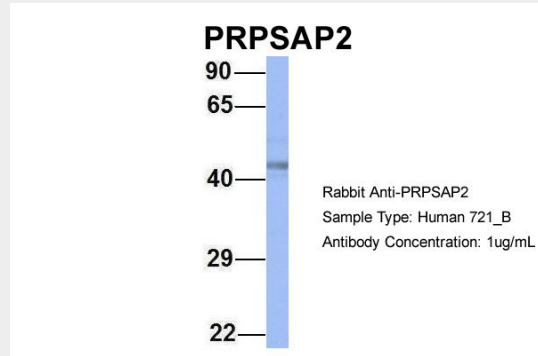
Ubiquitous.

PRPSAP2 Antibody - N-terminal region - Protocols

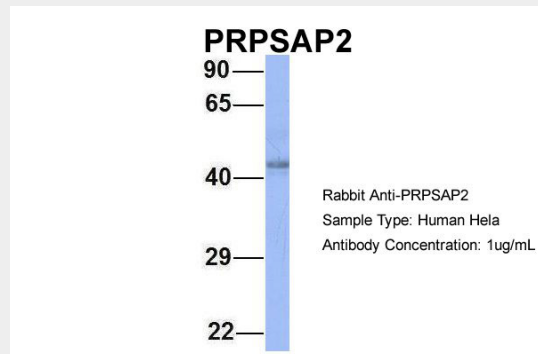
Provided below are standard protocols that you may find useful for product applications.

- [Western Blot](#)
- [Blocking Peptides](#)
- [Dot Blot](#)
- [Immunohistochemistry](#)
- [Immunofluorescence](#)
- [Immunoprecipitation](#)
- [Flow Cytometry](#)
- [Cell Culture](#)

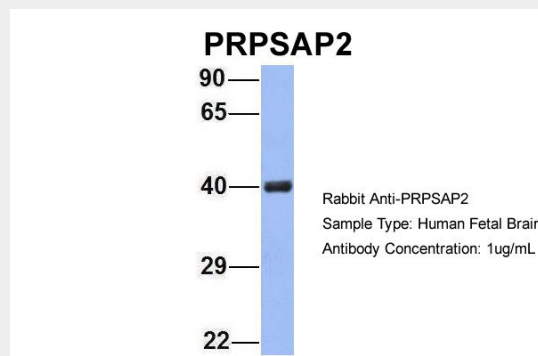
Host:Rabbit
 Target Name:PRPSAP2
 Sample Tissue:MCF7
 Antibody Dilution: 1.0µg/mlPRPSAP2 is supported by BioGPS gene expression data to be expressed in MCF7



Host:Rabbit
 Target Name:PRPSAP2
 Sample Tissue:721_B
 Antibody Dilution: 1.0µg/mlPRPSAP2 is supported by BioGPS gene expression data to be expressed in 721_B



Host:Rabbit
 Target Name:PRPSAP2
 Sample Tissue:HeLa
 Antibody Dilution: 1.0µg/mlPRPSAP2 is supported by BioGPS gene expression data to be expressed in HeLa



Host:Rabbit Target Name:PRPSAP2 Sample
Tissue:Human Fetal Brain Antibody Dilution:
1.0ug/ml

PRPSAP2 Antibody - N-terminal region - References

Katashima R.,et al.Biochim. Biophys. Acta
1396:245-250(1998).
Ota T.,et al.Nat. Genet. 36:40-45(2004).
Ebert L.,et al.Submitted (JUN-2004) to the
EMBL/GenBank/DDBJ databases.
Zody M.C.,et al.Nature 440:1045-1049(2006).
Bienvenut W.V.,et al.Submitted (MAR-2009) to
UniProtKB.