

RALGDS antibody - N-terminal region
Rabbit Polyclonal Antibody
Catalog # AI13925

Specification

RALGDS antibody - N-terminal region - Product Information

Application	WB
Primary Accession	O6KH11
Other Accession	NM_001042368 , NP_001035827
Reactivity	Human, Mouse, Rat, Pig, Bovine, Guinea Pig, Dog
Predicted	Human, Mouse, Rat, Bovine, Guinea Pig, Dog
Host	Rabbit
Clonality	Polyclonal
Calculated MW	95kDa KDa

RALGDS antibody - N-terminal region - Additional Information

Alias Symbol	FLJ20922, RGF, RaLGEF, RGDS
--------------	------------------------------------

Format

Liquid. Purified antibody supplied in 1x PBS buffer with 0.09% (w/v) sodium azide and 2% sucrose.

Reconstitution & Storage

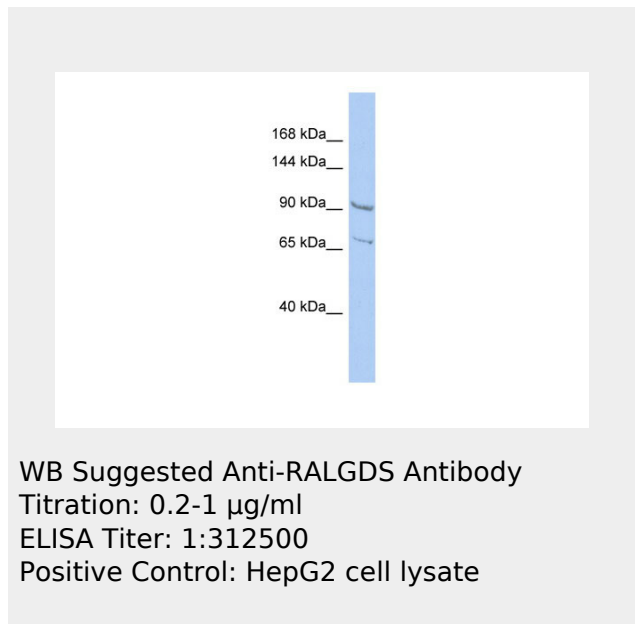
Add 50 ul of distilled water. Final anti-RALGDS antibody concentration is 1 mg/ml in PBS buffer with 2% sucrose. For longer periods of storage, store at 20°C. Avoid repeat freeze-thaw cycles.

Precautions

RALGDS antibody - N-terminal region is for research use only and not for use in diagnostic or therapeutic procedures.

RALGDS antibody - N-terminal region - Protein Information

RALGDS antibody - N-terminal region - Protocols



Provided below are standard protocols that you may find useful for product applications.

- [Western Blot](#)
- [Blocking Peptides](#)
- [Dot Blot](#)
- [Immunohistochemistry](#)
- [Immunofluorescence](#)
- [Immunoprecipitation](#)
- [Flow Cytometry](#)
- [Cell Culture](#)