

Bin1 antibody - N-terminal region
Rabbit Polyclonal Antibody
Catalog # AI13795

Specification

Bin1 antibody - N-terminal region - Product Information

Application	WB
Primary Accession	Q6P1B9
Other Accession	NM_001083334 , NP_001076803
Reactivity	Human, Mouse, Rat, Rabbit, Pig, Horse, Bovine, Dog
Predicted	Human, Mouse, Rat, Rabbit, Pig, Chicken, Horse, Bovine, Dog
Host	Rabbit
Clonality	Polyclonal
Calculated MW	53kDa KDa

Bin1 antibody - N-terminal region - Additional Information

Alias Symbol	ALP-1, Amphl, BRAMP-2, SH3P9
--------------	---------------------------------

Format

Liquid. Purified antibody supplied in 1x PBS buffer with 0.09% (w/v) sodium azide and 2% sucrose.

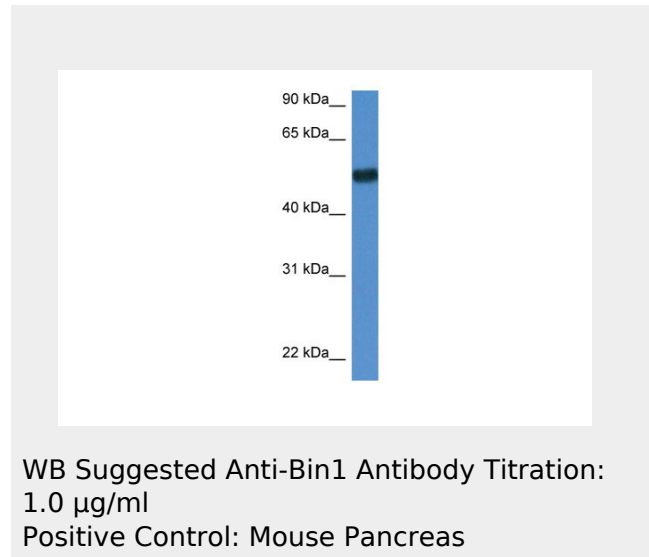
Reconstitution & Storage

Add 50 ul of distilled water. Final anti-Bin1 antibody concentration is 1 mg/ml in PBS buffer with 2% sucrose. For longer periods of storage, store at 20°C. Avoid repeat freeze-thaw cycles.

Precautions

Bin1 antibody - N-terminal region is for research use only and not for use in diagnostic or therapeutic procedures.

Bin1 antibody - N-terminal region - Protein Information



**Bin1 antibody - N-terminal region -
Protocols**

Provided below are standard protocols that you may find useful for product applications.

- [Western Blot](#)
- [Blocking Peptides](#)
- [Dot Blot](#)
- [Immunohistochemistry](#)
- [Immunofluorescence](#)
- [Immunoprecipitation](#)
- [Flow Cytometry](#)
- [Cell Culture](#)