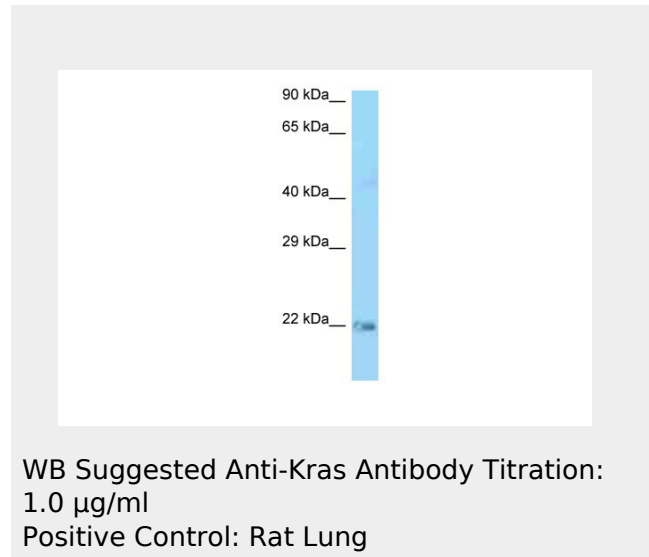


**Kras antibody - N-terminal region**  
**Rabbit Polyclonal Antibody**  
 Catalog # AI13790

**Specification**

**Kras antibody - N-terminal region - Product Information**

Application	<b>WB</b>
Primary Accession	<a href="#">A0JN17</a>
Other Accession	<a href="#">NM_031515</a> , <a href="#">NP_113703</a>
Reactivity	<b>Human, Mouse, Rat, Rabbit, Horse, Bovine, Guinea Pig, Dog</b>
Predicted	<b>Human, Mouse, Rat, Rabbit, Chicken, Horse, Bovine, Dog</b>
Host	<b>Rabbit</b>
Clonality	<b>Polyclonal</b>
Calculated MW	<b>20kDa KDa</b>



**Kras antibody - N-terminal region - Additional Information**

Alias Symbol	<b>Kras2, c-Ki-ras, p21</b>
--------------	-----------------------------

**Format**

Liquid. Purified antibody supplied in 1x PBS buffer with 0.09% (w/v) sodium azide and 2% sucrose.

**Reconstitution & Storage**

Add 50 µl of distilled water. Final anti-Kras antibody concentration is 1 mg/ml in PBS buffer with 2% sucrose. For longer periods of storage, store at 20°C. Avoid repeat freeze-thaw cycles.

**Precautions**

Kras antibody - N-terminal region is for research use only and not for use in diagnostic or therapeutic procedures.

**Kras antibody - N-terminal region - Protein Information**

**Kras antibody - N-terminal region -  
Protocols**

Provided below are standard protocols that you may find useful for product applications.

- [Western Blot](#)
- [Blocking Peptides](#)
- [Dot Blot](#)
- [Immunohistochemistry](#)
- [Immunofluorescence](#)
- [Immunoprecipitation](#)
- [Flow Cytometry](#)
- [Cell Culture](#)