

Camk2b Antibody - middle region
Rabbit Polyclonal Antibody
Catalog # AI13785

Specification

Camk2b Antibody - middle region - Product Information

Application	WB
Primary Accession	Q63094
Other Accession	NM_001042354 , NP_001035813
Reactivity	Human, Mouse, Rat, Rabbit, Pig, Horse, Yeast, Bovine, Guinea Pig, Dog
Predicted	Human, Mouse, Rat, Rabbit, Pig, Horse, Yeast, Bovine, Guinea Pig, Dog
Host	Rabbit
Clonality	Polyclonal
Calculated MW	64kDa KDa

Camk2b Antibody - middle region - Additional Information

Alias Symbol **Ck2b**

Format
Liquid. Purified antibody supplied in 1x PBS buffer with 0.09% (w/v) sodium azide and 2% sucrose.

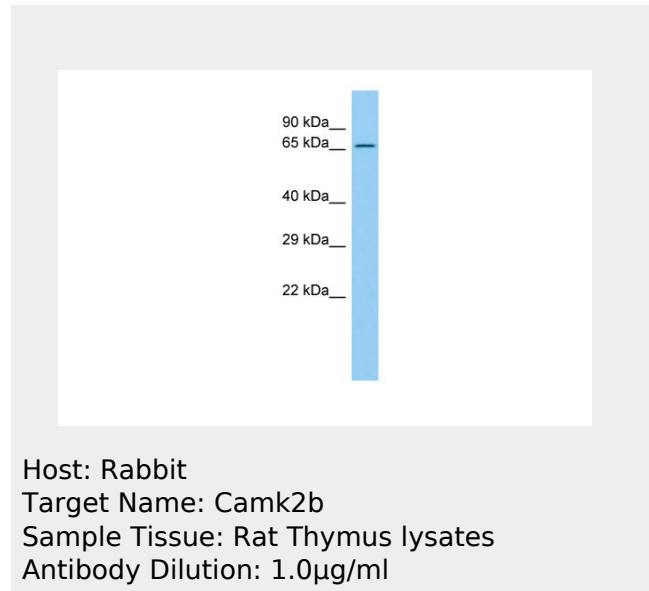
Reconstitution & Storage

Add 50 ul of distilled water. Final anti-Camk2b antibody concentration is 1 mg/ml in PBS buffer with 2% sucrose. For longer periods of storage, store at 20°C. Avoid repeat freeze-thaw cycles.

Precautions

Camk2b Antibody - middle region is for research use only and not for use in diagnostic or therapeutic procedures.

Camk2b Antibody - middle region - Protein Information



**Camk2b Antibody - middle region -
Protocols**

Provided below are standard protocols that you may find useful for product applications.

- [Western Blot](#)
- [Blocking Peptides](#)
- [Dot Blot](#)
- [Immunohistochemistry](#)
- [Immunofluorescence](#)
- [Immunoprecipitation](#)
- [Flow Cytometry](#)
- [Cell Culture](#)