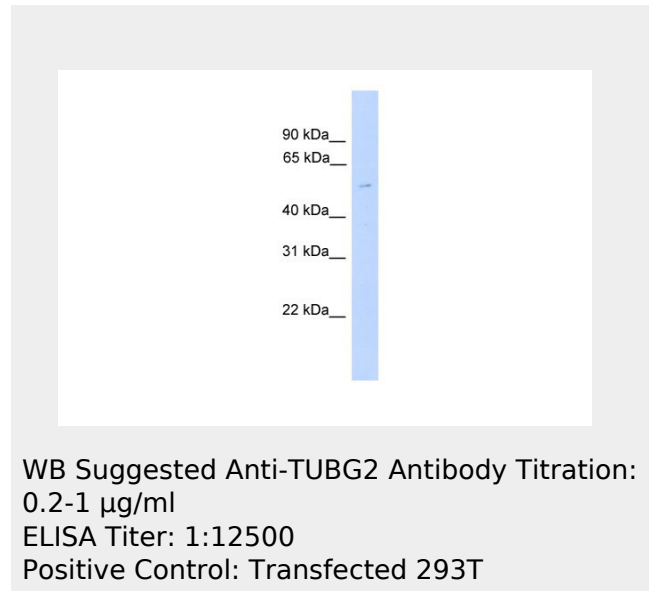


TUBG2 antibody - middle region
Rabbit Polyclonal Antibody
Catalog # AI13784

Specification

TUBG2 antibody - middle region - Product Information

Application	WB
Primary Accession	Q9NRH3
Other Accession	NM_016437 , NP_057521
Reactivity	Human, Mouse, Rat, Rabbit, Pig, Horse, Yeast, Bovine, Guinea Pig, Dog
Predicted	Mouse, Rabbit, Dog
Host	Rabbit
Clonality	Polyclonal
Calculated MW	51kDa KDa



TUBG2 antibody - middle region - Additional Information

Gene ID 27175

Alias Symbol **MGC131994**
Other Names
Tubulin gamma-2 chain, Gamma-2-tubulin, TUBG2

Format

Liquid. Purified antibody supplied in 1x PBS buffer with 0.09% (w/v) sodium azide and 2% sucrose.

Reconstitution & Storage

Add 50 ul of distilled water. Final anti-TUBG2 antibody concentration is 1 mg/ml in PBS buffer with 2% sucrose. For longer periods of storage, store at 20°C. Avoid repeat freeze-thaw cycles.

Precautions

TUBG2 antibody - middle region is for research use only and not for use in diagnostic or therapeutic procedures.

TUBG2 antibody - middle region - Protein

TUBG2 antibody - middle region - References

Wise D.O.,et al.Genomics 67:164-170(2000).
Ota T.,et al.Nat. Genet. 36:40-45(2004).
Zody M.C.,et al.Nature 440:1045-1049(2006).

Information**Name** TUBG2**Function**

Tubulin is the major constituent of microtubules. The gamma chain is found at microtubule organizing centers (MTOC) such as the spindle poles or the centrosome. Pericentriolar matrix component that regulates alpha/beta chain minus-end nucleation, centrosome duplication and spindle formation (By similarity).

Cellular Location

Cytoplasm, cytoskeleton, microtubule organizing center, centrosome

**TUBG2 antibody - middle region -
Protocols**

Provided below are standard protocols that you may find useful for product applications.

- [Western Blot](#)
- [Blocking Peptides](#)
- [Dot Blot](#)
- [Immunohistochemistry](#)
- [Immunofluorescence](#)
- [Immunoprecipitation](#)
- [Flow Cytometry](#)
- [Cell Culture](#)