

IRF2BP1 antibody - middle region
Rabbit Polyclonal Antibody
Catalog # AI13776

Specification

IRF2BP1 antibody - middle region - Product Information

Application	WB
Primary Accession	Q8IU81
Other Accession	NM_015649 , NP_056464
Reactivity	Human, Mouse, Rat, Rabbit, Pig, Horse, Bovine, Guinea Pig, Dog
Predicted	Rat, Rabbit, Pig, Horse, Bovine, Guinea Pig, Dog
Host	Rabbit
Clonality	Polyclonal
Calculated MW	62kDa KDa

IRF2BP1 antibody - middle region - Additional Information

Gene ID 26145

Alias Symbol DKFZP434M154

Other Names

Interferon regulatory factor 2-binding protein 1, IRF-2-binding protein 1, IRF-2BP1, Probable E3 ubiquitin-protein ligase IRF2BP1, 6.3.2.-, IRF2BP1

Format

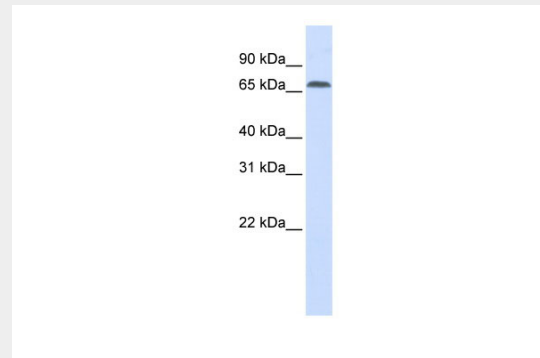
Liquid. Purified antibody supplied in 1x PBS buffer with 0.09% (w/v) sodium azide and 2% sucrose.

Reconstitution & Storage

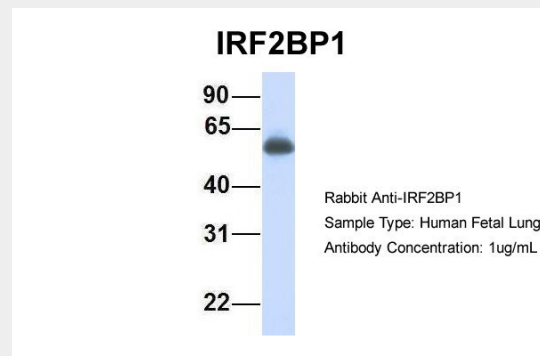
Add 50 ul of distilled water. Final anti-IRF2BP1 antibody concentration is 1 mg/ml in PBS buffer with 2% sucrose. For longer periods of storage, store at 20°C. Avoid repeat freeze-thaw cycles.

Precautions

IRF2BP1 antibody - middle region is for research use only and not for use in diagnostic or therapeutic procedures.



WB Suggested Anti-IRF2BP1 Antibody Titration: 0.2-1 µg/ml
ELISA Titer: 1:62500
Positive Control: Human Placenta



Host:Rabbit
Target Name:IRF2BP1
Sample Tissue:Human Fetal Lung
Antibody Dilution: 1.0µg/ml

IRF2BP1 antibody - middle region - References

Childs K.S.,et al.Nucleic Acids Res. 31:3016-3026(2003).
Totoki Y.,et al.Submitted (APR-2005) to the EMBL/GenBank/DDBJ databases.
Mural R.J.,et al.Submitted (JUL-2005) to the EMBL/GenBank/DDBJ databases.
Bechtel S.,et al.BMC Genomics 8:399-399(2007).
Olsen J.V.,et al.Cell 127:635-648(2006).

IRF2BP1 antibody - middle region - Protein Information**Name** IRF2BP1**Function**

Acts as a transcriptional corepressor in a IRF2-dependent manner; this repression is not mediated by histone deacetylase activities. May act as an E3 ligase towards JDP2, enhancing its polyubiquitination. Represses ATF2-dependent transcriptional activation.

Cellular Location

Nucleus.

IRF2BP1 antibody - middle region - Protocols

Provided below are standard protocols that you may find useful for product applications.

- [Western Blot](#)
- [Blocking Peptides](#)
- [Dot Blot](#)
- [Immunohistochemistry](#)
- [Immunofluorescence](#)
- [Immunoprecipitation](#)
- [Flow Cytometry](#)
- [Cell Culture](#)