

ZSWIM3 antibody - N-terminal region
Rabbit Polyclonal Antibody
Catalog # AI13575

Specification

ZSWIM3 antibody - N-terminal region - Product Information

Application	WB
Primary Accession	Q96MP5
Other Accession	NM_080752 , NP_542790
Reactivity	Human, Mouse, Rat, Rabbit, Pig, Horse, Guinea Pig, Dog
Predicted	Mouse, Rat, Rabbit, Pig, Horse, Dog
Host	Rabbit
Clonality	Polyclonal
Calculated MW	77kDa KDa

ZSWIM3 antibody - N-terminal region - Additional Information

Gene ID 140831

Alias Symbol **C20orf164**
Other Names
Zinc finger SWIM domain-containing protein 3, ZSWIM3, C20orf164

Format

Liquid. Purified antibody supplied in 1x PBS buffer with 0.09% (w/v) sodium azide and 2% sucrose.

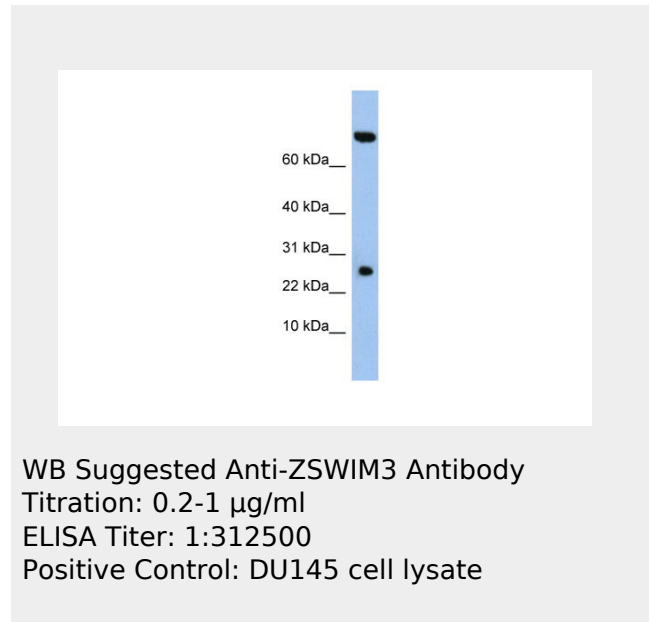
Reconstitution & Storage

Add 50 ul of distilled water. Final anti-ZSWIM3 antibody concentration is 1 mg/ml in PBS buffer with 2% sucrose. For longer periods of storage, store at 20°C. Avoid repeat freeze-thaw cycles.

Precautions

ZSWIM3 antibody - N-terminal region is for research use only and not for use in diagnostic or therapeutic procedures.

ZSWIM3 antibody - N-terminal region - Protein



ZSWIM3 antibody - N-terminal region - References

Ota T., et al. Nat. Genet. 36:40-45(2004).
Deloukas P., et al. Nature 414:865-871(2001).

Information**Name** ZSWIM3**Synonyms** C20orf164**ZSWIM3 antibody - N-terminal region -
Protocols**

Provided below are standard protocols that you may find useful for product applications.

- [Western Blot](#)
- [Blocking Peptides](#)
- [Dot Blot](#)
- [Immunohistochemistry](#)
- [Immunofluorescence](#)
- [Immunoprecipitation](#)
- [Flow Cytometry](#)
- [Cell Culture](#)