

PHACTR3 antibody - C-terminal region
Rabbit Polyclonal Antibody
Catalog # AI13558

Specification

PHACTR3 antibody - C-terminal region - Product Information

Application	WB
Primary Accession	B1AN69
Other Accession	NM_183246 , NP_899069
Reactivity	Human, Mouse, Rat, Rabbit, Pig, Horse, Bovine, Guinea Pig, Dog
Predicted	Human, Mouse, Rat, Rabbit, Pig, Chicken, Horse, Bovine, Guinea Pig, Dog
Host	Rabbit
Clonality	Polyclonal
Calculated MW	51kDa KDa

PHACTR3 antibody - C-terminal region - Additional Information

Alias Symbol	C20orf101, H17739, MGC117178, SCAPIN1, SCAPININ
--------------	--------------------------------------------------------

Format

Liquid. Purified antibody supplied in 1x PBS buffer with 0.09% (w/v) sodium azide and 2% sucrose.

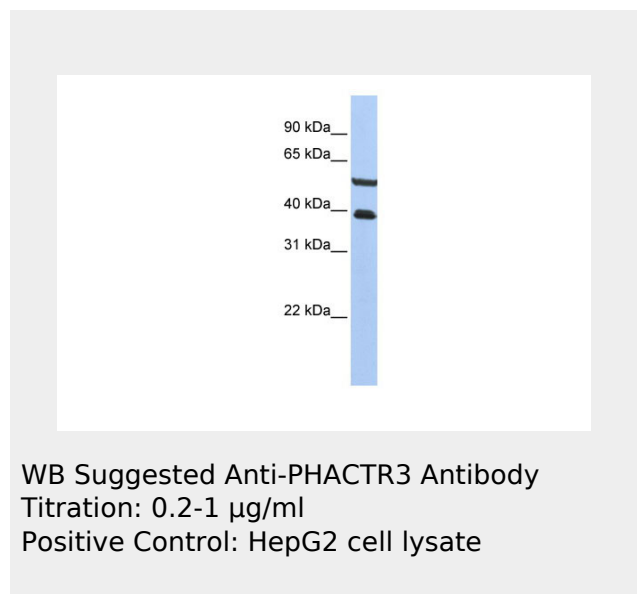
Reconstitution & Storage

Add 50 ul of distilled water. Final anti-PHACTR3 antibody concentration is 1 mg/ml in PBS buffer with 2% sucrose. For longer periods of storage, store at 20°C. Avoid repeat freeze-thaw cycles.

Precautions

PHACTR3 antibody - C-terminal region is for research use only and not for use in diagnostic or therapeutic procedures.

PHACTR3 antibody - C-terminal region - Protein



Information

PHACTR3 antibody - C-terminal region - Protocols

Provided below are standard protocols that you may find useful for product applications.

- [Western Blot](#)
- [Blocking Peptides](#)
- [Dot Blot](#)
- [Immunohistochemistry](#)
- [Immunofluorescence](#)
- [Immunoprecipitation](#)
- [Flow Cytometry](#)
- [Cell Culture](#)