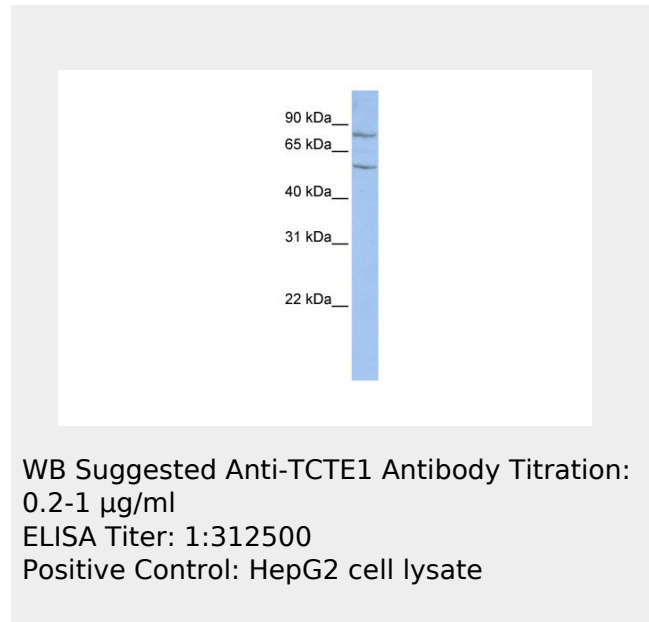


**TCTE1 antibody - middle region**  
**Rabbit Polyclonal Antibody**  
Catalog # AI13554

**Specification**

**TCTE1 antibody - middle region - Product Information**

Application	<b>WB</b>
Primary Accession	<a href="#">Q5JU00</a>
Other Accession	<a href="#">NM_182539</a> , <a href="#">NP_872345</a>
Reactivity	<b>Human, Mouse, Rat, Rabbit, Pig, Horse, Guinea Pig, Dog</b>
Predicted	<b>Human, Mouse, Rat, Chicken, Horse, Guinea Pig, Dog</b>
Host	<b>Rabbit</b>
Clonality	<b>Polyclonal</b>
Calculated MW	<b>56kDa KDa</b>



**TCTE1 antibody - middle region - Additional Information**

**Gene ID** 202500

**Alias Symbol** **D6S46,**  
**MGC33600**

**Other Names**

T-complex-associated testis-expressed protein 1, Tcte-1, TCTE1

**Format**

Liquid. Purified antibody supplied in 1x PBS buffer with 0.09% (w/v) sodium azide and 2% sucrose.

**Reconstitution & Storage**

Add 50 ul of distilled water. Final anti-TCTE1 antibody concentration is 1 mg/ml in PBS buffer with 2% sucrose. For longer periods of storage, store at 20°C. Avoid repeat freeze-thaw cycles.

**Precautions**

TCTE1 antibody - middle region is for research use only and not for use in diagnostic or therapeutic procedures.

**TCTE1 antibody - middle region - References**

Ota T.,et al.Nat. Genet. 36:40-45(2004).  
Mungall A.J.,et al.Nature 425:805-811(2003).

**TCTE1 antibody - middle region - Protein Information****Name** TCTE1**Synonyms** DRC5

{ECO:0000250|UniProtKB:A6H639}

**Function**

Component of the nexin-dynein regulatory complex (N-DRC) a key regulator of ciliary/flagellar motility which maintains the alignment and integrity of the distal axoneme and regulates microtubule sliding in motile axonemes. May play a role in the assembly of N-DRC. May be required for sperm motility.

**Cellular Location**

Cell projection, cilium, flagellum  
{ECO:0000250|UniProtKB:A6H639}.

Cytoplasm, cytoskeleton, flagellum  
axoneme  
{ECO:0000250|UniProtKB:A8HMZ4}.

Note=Detected along the length of the sperm flagellum.

{ECO:0000250|UniProtKB:A6H639}

**TCTE1 antibody - middle region - Protocols**

Provided below are standard protocols that you may find useful for product applications.

- [Western Blot](#)
- [Blocking Peptides](#)
- [Dot Blot](#)
- [Immunohistochemistry](#)
- [Immunofluorescence](#)
- [Immunoprecipitation](#)
- [Flow Cytometry](#)
- [Cell Culture](#)