

**HORMAD2 antibody - N-terminal region**  
**Rabbit Polyclonal Antibody**  
 Catalog # AI13491

**Specification**

**HORMAD2 antibody - N-terminal region - Product Information**

Application	<b>WB</b>
Primary Accession	<a href="#">Q8N7B1</a>
Other Accession	<a href="#">NM_152510</a> , <a href="#">NP_689723</a>
Reactivity	<b>Human, Mouse, Rat, Rabbit, Pig, Horse, Yeast, Bovine, Dog</b>
Predicted	<b>Human, Mouse, Rat, Rabbit, Pig, Chicken, Dog</b>
Host	<b>Rabbit</b>
Clonality	<b>Polyclonal</b>
Calculated MW	<b>35kDa KDa</b>

**HORMAD2 antibody - N-terminal region - Additional Information**

**Gene ID** 150280

**Alias Symbol** **MGC26710**  
**Other Names**  
 HORMA domain-containing protein 2,  
 HORMAD2

**Format**

Liquid. Purified antibody supplied in 1x PBS buffer with 0.09% (w/v) sodium azide and 2% sucrose.

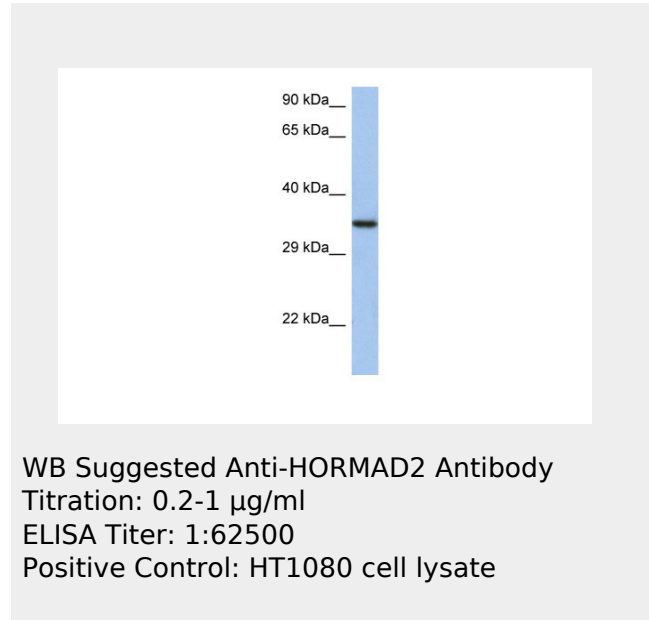
**Reconstitution & Storage**

Add 50 ul of distilled water. Final anti-HORMAD2 antibody concentration is 1 mg/ml in PBS buffer with 2% sucrose. For longer periods of storage, store at 20°C. Avoid repeat freeze-thaw cycles.

**Precautions**

HORMAD2 antibody - N-terminal region is for research use only and not for use in diagnostic or therapeutic procedures.

**HORMAD2 antibody - N-terminal region - Protein**



**HORMAD2 antibody - N-terminal region - References**

Collins J.E.,et al.Genome Biol. 5:R84.1-R84.11(2004).  
 Ota T.,et al.Nat. Genet. 36:40-45(2004).  
 Dunham I.,et al.Nature 402:489-495(1999).  
 Mural R.J.,et al.Submitted (JUL-2005) to the EMBL/GenBank/DDBJ databases.  
 Chen Y.-T.,et al.Cancer Immun. 5:9-9(2005).

**Information****Name** HORMAD2**Function**

Essential for synapsis surveillance during meiotic prophase via the recruitment of ATR activity. Plays a key role in the male mid-pachytene checkpoint and the female meiotic prophase checkpoint: required for efficient build-up of ATR activity on unsynapsed chromosome regions, a process believed to form the basis of meiotic silencing of unsynapsed chromatin (MSUC) and meiotic prophase quality control in both sexes. Required for the DNA double-strand break- independent, BRCA1-dependent activation of ATR on the sex chromosomes that is essential for normal sex body formation (By similarity).

**Cellular Location**

Nucleus. Chromosome. Note=Preferentially localizes to unsynapsed or desynapsed chromosomal regions during the male and female prophase I stage of meiosis. TRIP13 is required for depletion from synapsed chromosomes (By similarity).

**Tissue Location**

Highly expressed in testis (at protein level). Expressed in lung adenocarcinoma and squamous cell carcinoma (at protein level). Expressed at lower levels in the liver, brain and kidney.

**HORMAD2 antibody - N-terminal region - Protocols**

Provided below are standard protocols that you may find useful for product applications.

- [Western Blot](#)
- [Blocking Peptides](#)
- [Dot Blot](#)
- [Immunohistochemistry](#)
- [Immunofluorescence](#)
- [Immunoprecipitation](#)
- [Flow Cytometry](#)
- [Cell Culture](#)