

**ACTRT1 antibody - middle region**  
**Rabbit Polyclonal Antibody**  
**Catalog # AI13433**

**Specification**

**ACTRT1 antibody - middle region - Product Information**

Application **WB**  
 Primary Accession [Q8TDG2](#)  
 Other Accession [NM\\_138289](#),  
[NP\\_612146](#)  
 Reactivity **Human, Mouse, Rat, Rabbit, Pig, Horse, Bovine, Guinea Pig, Dog**  
 Predicted Host **Bovine, Dog**  
 Clonality **Rabbit Polyclonal**  
 Calculated MW **42 KDa**

**ACTRT1 antibody - middle region - Additional Information**

**Gene ID 139741**

Alias Symbol **AIP1, ARIP1, ARP-T1, ARPT1, HSD27, KIAA0705, MGC26590**

**Other Names**

Actin-related protein T1, ARP-T1, ACTRT1, ARPT1

**Format**

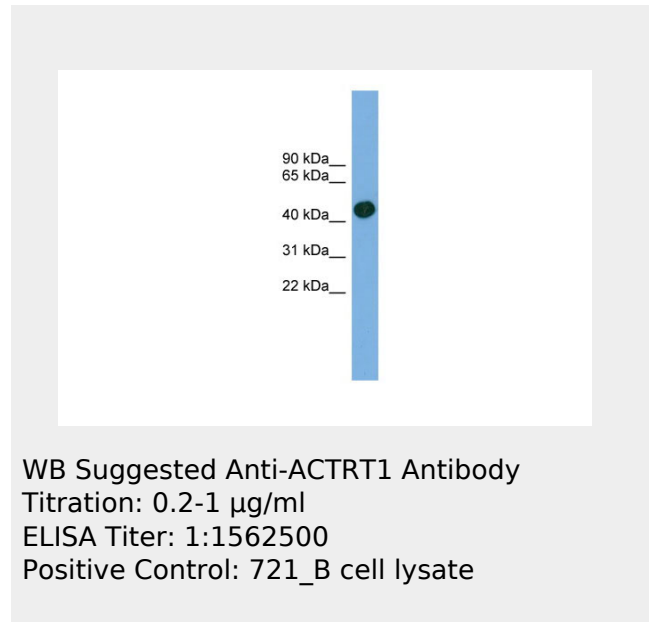
Liquid. Purified antibody supplied in 1x PBS buffer with 0.09% (w/v) sodium azide and 2% sucrose.

**Reconstitution & Storage**

Add 50 ul of distilled water. Final anti-ACTRT1 antibody concentration is 1 mg/ml in PBS buffer with 2% sucrose. For longer periods of storage, store at 20°C. Avoid repeat freeze-thaw cycles.

**Precautions**

ACTRT1 antibody - middle region is for research use only and not for use in diagnostic or therapeutic procedures.



**ACTRT1 antibody - middle region - References**

Heid H.W., et al. Exp. Cell Res. 279:177-187(2002).  
 Wu N., et al. Submitted (MAR-2003) to the EMBL/GenBank/DDBJ databases.  
 Ross M.T., et al. Nature 434:325-337(2005).

**ACTRT1 antibody - middle region - Protein Information**

**Name** ACTRT1 ([HGNC:24027](#))

**Function**

Negatively regulates the Hedgehog (SHH) signaling. Binds to the promoter of the SHH signaling mediator, GLI1, and inhibits its expression.

**Cellular Location**

Cytoplasm, cytoskeleton. Cytoplasm Nucleus. Note=Both detected in the nucleus and cytoplasm, localizes to the nucleus where it binds chromatin upon stimulation of the Hedgehog pathway

**Tissue Location**

In skin, expressed in the basal, spinous and granular layers of the epidermis. Also expressed in hair follicles, sebaceous glands, eccrine sweat glands and semen

**ACTRT1 antibody - middle region - Protocols**

Provided below are standard protocols that you may find useful for product applications.

- [Western Blot](#)
- [Blocking Peptides](#)
- [Dot Blot](#)
- [Immunohistochemistry](#)
- [Immunofluorescence](#)
- [Immunoprecipitation](#)
- [Flow Cytometry](#)
- [Cell Culture](#)