

**ADC antibody - middle region**  
Rabbit Polyclonal Antibody  
Catalog # AI13418

**Specification**

**ADC antibody - middle region - Product Information**

Application	<b>WB</b>
Primary Accession	<a href="#">Q96A70</a>
Other Accession	<a href="#">NM_052998</a> , <a href="#">NP_443724</a>
Reactivity	<b>Human, Mouse, Rat, Rabbit, Pig, Horse, Bovine, Guinea Pig, Dog</b>
Predicted	<b>Human, Mouse, Rat, Rabbit, Pig, Horse, Bovine, Dog</b>
Host	<b>Rabbit</b>
Clonality	<b>Polyclonal</b>
Calculated MW	<b>50kDa KDa</b>

**ADC antibody - middle region - Additional Information**

**Gene ID** 113451

**Alias Symbol** **AZI2, KIAA1945, ODC-p, ODC1L**

**Other Names**

Antizyme inhibitor 2, Azi2, Arginine decarboxylase, ADC, ARGDC, Ornithine decarboxylase-like protein, ODC-like protein, ornithine decarboxylase paralog, ODC-p, AZIN2, ADC, KIAA1945, ODCP

**Format**

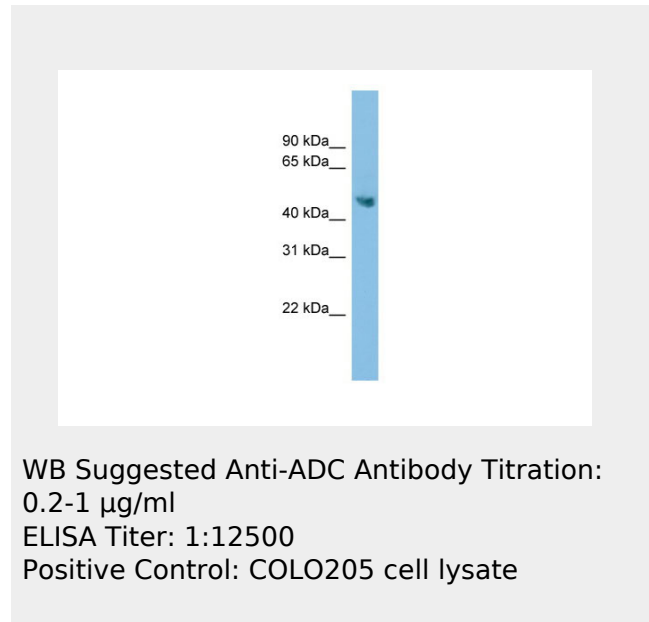
Liquid. Purified antibody supplied in 1x PBS buffer with 0.09% (w/v) sodium azide and 2% sucrose.

**Reconstitution & Storage**

Add 50 ul of distilled water. Final anti-ADC antibody concentration is 1 mg/ml in PBS buffer with 2% sucrose. For longer periods of storage, store at 20°C. Avoid repeat freeze-thaw cycles.

**Precautions**

ADC antibody - middle region is for research



**ADC antibody - middle region - References**

Pitkaenen L.T.,et al.Biochem. Biophys. Res. Commun. 287:1051-1057(2001).  
Zhu M.-Y.,et al.Biochim. Biophys. Acta 1670:156-164(2004).  
Nagase T.,et al.DNA Res. 8:319-327(2001).  
Ota T.,et al.Nat. Genet. 36:40-45(2004).  
Gregory S.G.,et al.Nature 441:315-321(2006).

use only and not for use in diagnostic or therapeutic procedures.

**ADC antibody - middle region - Protein Information**

**Name** AZIN2

**Synonyms** ADC, KIAA1945, ODCP

**Function**

Antizyme inhibitor (AZI) protein that positively regulates ornithine decarboxylase (ODC) activity and polyamine uptake. AZI is an enzymatically inactive ODC homolog that counteracts the negative effect of ODC antizymes (AZs) OAZ1, OAZ2 and OAZ3 on ODC activity by competing with ODC for antizyme-binding (PubMed:<a href="http://www.uniprot.org/citations/17900240" target="\_blank">17900240</a>). Inhibits antizyme-dependent ODC degradation and releases ODC monomers from their inactive complex with antizymes, leading to formation of the catalytically active ODC homodimer and restoring polyamine production (PubMed:<a href="http://www.uniprot.org/citations/17900240" target="\_blank">17900240</a>). Participates in the morphological integrity of the trans-Golgi network (TGN) and functions as a regulator of intracellular secretory vesicle trafficking (PubMed:<a href="http://www.uniprot.org/citations/20188728" target="\_blank">20188728</a>).

**Cellular Location**

Nucleus. Cytoplasm. Cytoplasm, perinuclear region. Membrane. Cytoplasmic vesicle Endoplasmic reticulum-Golgi intermediate compartment Golgi apparatus, cis-Golgi network. Golgi apparatus, trans-Golgi network. Cytoplasmic granule. Cell projection, axon. Cell projection, dendrite. Perikaryon. Note=Colocalizes with KDEL receptors in ER-Golgi intermediate compartment (ERGIC). Translocates from the ERGIC structure to the cytoplasm in an antizyme-dependent manner Localizes with vesicle-associated membrane protein VAMP8 in the vicinity of the plasma membrane within serotonin-containing secretory granules (By similarity). Detected as vesicle-like pattern in neurite outgrowths. Localizes to the vesicular compartments of the secretory pathway,

predominantly in the trans-Golgi network (TGN). Localizes with vesicle-associated membrane protein VAMP8 in the vicinity of the plasma membrane within serotonin-containing secretory granules.

#### **Tissue Location**

Expressed in the neocortex, thalamus, hippocampus, cerebellum, medulla oblongata, gray and white matter. Expressed in neurons, oligodendrocytes, basket, Purkinje and pyramidal cells. Expressed in spermatocytes and Leydig cells of the testis. Expressed in luteal theca cells lining corpus luteum cysts and in hilus cells of the ovary. Expressed in primary and neoplastic mast cells (MC) (at protein level). Highly expressed in brain. Also expressed in testis

#### **ADC antibody - middle region - Protocols**

Provided below are standard protocols that you may find useful for product applications.

- [Western Blot](#)
- [Blocking Peptides](#)
- [Dot Blot](#)
- [Immunohistochemistry](#)
- [Immunofluorescence](#)
- [Immunoprecipitation](#)
- [Flow Cytometry](#)
- [Cell Culture](#)