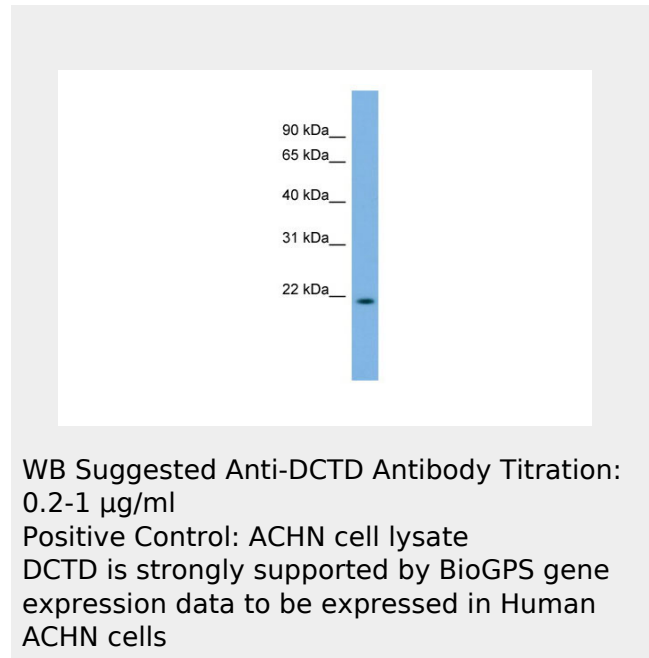


DCTD antibody - middle region
Rabbit Polyclonal Antibody
 Catalog # AI13331

Specification

DCTD antibody - middle region - Product Information

Application	WB
Primary Accession	D3DP49
Other Accession	NM_001012732 , NP_001012750
Reactivity	Human, Mouse, Rat, Rabbit, Goat, Horse, Bovine, Guinea Pig, Dog
Predicted	Human, Mouse, Rat, Rabbit, Chicken, Goat, Horse, Bovine, Guinea Pig, Dog
Host	Rabbit
Clonality	Polyclonal
Calculated MW	21kDa KDa



DCTD antibody - middle region - Additional Information

Alias Symbol **MGC111062**
Format
 Liquid. Purified antibody supplied in 1x PBS buffer with 0.09% (w/v) sodium azide and 2% sucrose.

Reconstitution & Storage
 Add 50 ul of distilled water. Final anti-DCTD antibody concentration is 1 mg/ml in PBS buffer with 2% sucrose. For longer periods of storage, store at 20°C. Avoid repeat freeze-thaw cycles.

Precautions
 DCTD antibody - middle region is for research use only and not for use in diagnostic or therapeutic procedures.

DCTD antibody - middle region - Protein Information

DCTD antibody - middle region - Protocols

Provided below are standard protocols that you may find useful for product applications.

- [Western Blot](#)
- [Blocking Peptides](#)
- [Dot Blot](#)
- [Immunohistochemistry](#)
- [Immunofluorescence](#)
- [Immunoprecipitation](#)
- [Flow Cytometry](#)
- [Cell Culture](#)