

LOC732440 antibody - C-terminal region
Rabbit Polyclonal Antibody
Catalog # AI13256

Specification

**LOC732440 antibody - C-terminal region -
Product Information**

Application	WB
Other Accession	XM_001133683 , XP_001133683
Reactivity	Human
Predicted	Human
Host	Rabbit
Clonality	Polyclonal
Calculated MW	19kDa KDa

**LOC732440 antibody - C-terminal region -
Additional Information**

Format

Liquid. Purified antibody supplied in 1x PBS buffer with 0.09% (w/v) sodium azide and 2% sucrose.

Reconstitution & Storage

Add 50 ul of distilled water. Final anti-LOC732440 antibody concentration is 1 mg/ml in PBS buffer with 2% sucrose. For longer periods of storage, store at 20°C. Avoid repeat freeze-thaw cycles.

Precautions

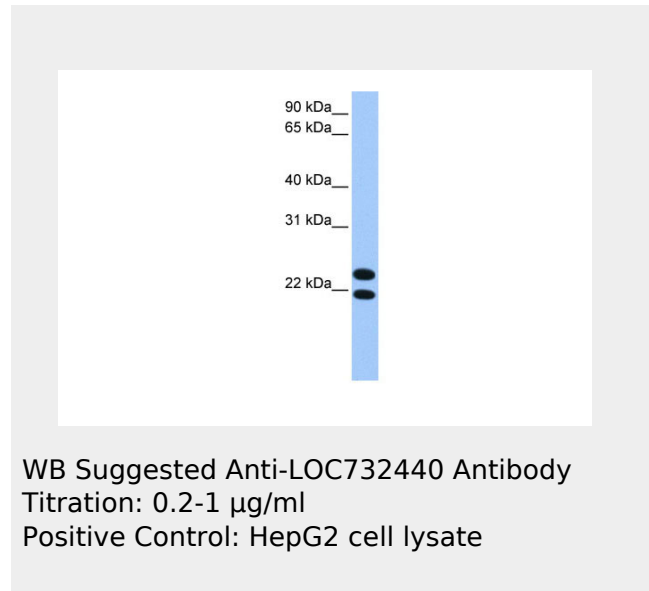
LOC732440 antibody - C-terminal region is for research use only and not for use in diagnostic or therapeutic procedures.

**LOC732440 antibody - C-terminal region - Protein
Information**

**LOC732440 antibody - C-terminal region -
Protocols**

Provided below are standard protocols that you may find useful for product applications.

- [Western Blot](#)
- [Blocking Peptides](#)
- [Dot Blot](#)



- [Immunohistochemistry](#)
- [Immunofluorescence](#)
- [Immunoprecipitation](#)
- [Flow Cytometry](#)
- [Cell Culture](#)