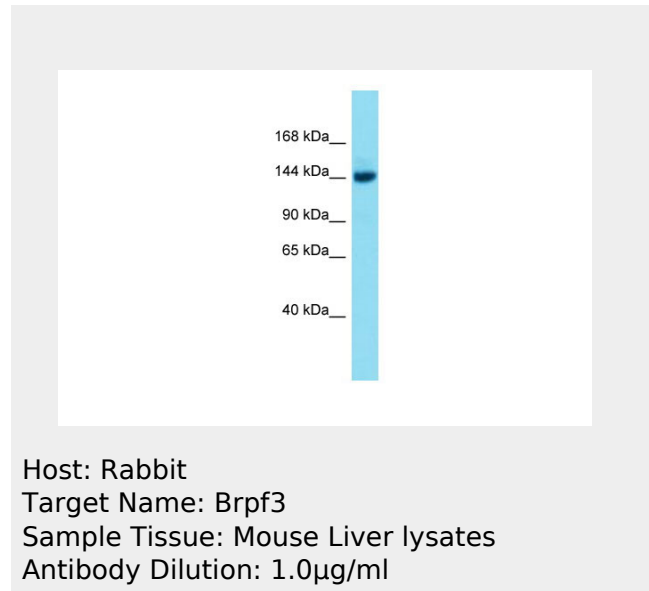


Brpf3 Antibody - middle region
Rabbit Polyclonal Antibody
Catalog # AI13196

Specification

Brpf3 Antibody - middle region - Product Information

Application	WB
Primary Accession	B2KF05
Other Accession	NM_001081315 , NP_001074784
Reactivity	Human, Mouse, Rat, Rabbit, Horse, Bovine, Dog
Predicted	Human, Mouse, Rat, Rabbit, Horse, Bovine, Dog
Host	Rabbit
Clonality	Polyclonal
Calculated MW	135kDa KDa



Brpf3 Antibody - middle region - Additional Information

Gene ID 268936

Alias Symbol **AI413466,**
AW493400,
mKIAA1286

Format

Liquid. Purified antibody supplied in 1x PBS buffer with 0.09% (w/v) sodium azide and 2% sucrose.

Reconstitution & Storage

Add 50 ul of distilled water. Final anti-Brpf3 antibody concentration is 1 mg/ml in PBS buffer with 2% sucrose. For longer periods of storage, store at 20°C. Avoid repeat freeze-thaw cycles.

Precautions

Brpf3 Antibody - middle region is for research use only and not for use in diagnostic or therapeutic procedures.

Brpf3 Antibody - middle region - Protein Information

Name Brpf3

{ECO:0000303|PubMed:26677226,
ECO:0000312|MGI:MGI:2146836}

Function

Scaffold subunit of various histone acetyltransferase (HAT) complexes, such as the MOZ/MORF and HBO1 complexes, which have a histone H3 acetyltransferase activity. Plays a role in DNA replication initiation by directing KAT7/HBO1 specificity towards histone H3 'Lys- 14' acetylation (H3K14ac), thereby facilitating the activation of replication origins. Component of the MOZ/MORF complex which has a histone H3 acetyltransferase activity.

Cellular Location

Nucleus
{ECO:0000250|UniProtKB:Q9ULD4}.

Tissue Location

Highly expressed in the adult testis and brain.

Brpf3 Antibody - middle region - Protocols

Provided below are standard protocols that you may find useful for product applications.

- [Western Blot](#)
- [Blocking Peptides](#)
- [Dot Blot](#)
- [Immunohistochemistry](#)
- [Immunofluorescence](#)
- [Immunoprecipitation](#)
- [Flow Cytometry](#)
- [Cell Culture](#)