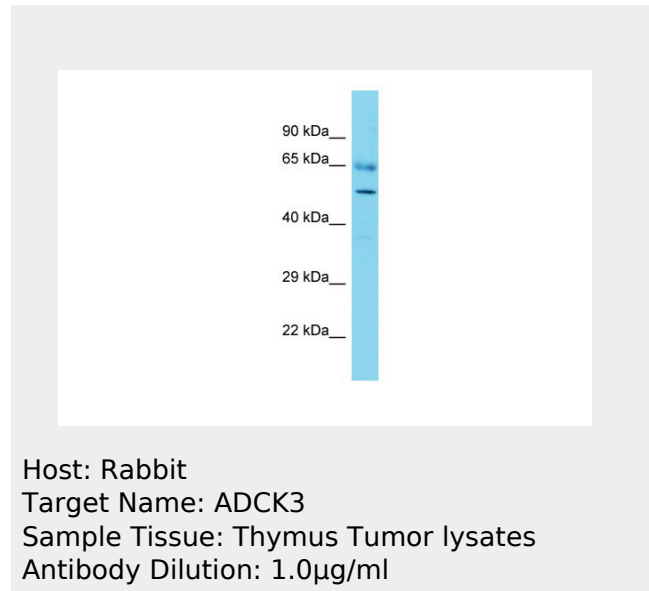


ADCK3 Antibody - C-terminal region
Rabbit Polyclonal Antibody
Catalog # AI12902

Specification

ADCK3 Antibody - C-terminal region - Product Information

| | |
|-------------------|--|
| Application | WB |
| Primary Accession | Q5T7A2 |
| Reactivity | Human, Mouse, Rat, Rabbit, Zebrafish, Pig, Horse, Yeast, Bovine, Guinea Pig, Dog |
| Predicted | Human, Mouse, Rat, Rabbit, Zebrafish, Pig, Horse, Bovine, Guinea Pig, Dog |
| Host | Rabbit |
| Clonality | Polyclonal |
| Calculated MW | 54kDa KDa |



ADCK3 Antibody - C-terminal region - Additional Information

Format

Liquid. Purified antibody supplied in 1x PBS buffer with 0.09% (w/v) sodium azide and 2% sucrose.

Reconstitution & Storage

Add 50 ul of distilled water. Final anti-ADCK3 antibody concentration is 1 mg/ml in PBS buffer with 2% sucrose. For longer periods of storage, store at 20°C. Avoid repeat freeze-thaw cycles.

Precautions

ADCK3 Antibody - C-terminal region is for research use only and not for use in diagnostic or therapeutic procedures.

ADCK3 Antibody - C-terminal region - Protein Information

ADCK3 Antibody - C-terminal region -

Protocols

Provided below are standard protocols that you may find useful for product applications.

- [Western Blot](#)
- [Blocking Peptides](#)
- [Dot Blot](#)
- [Immunohistochemistry](#)
- [Immunofluorescence](#)
- [Immunoprecipitation](#)
- [Flow Cytometry](#)
- [Cell Culture](#)