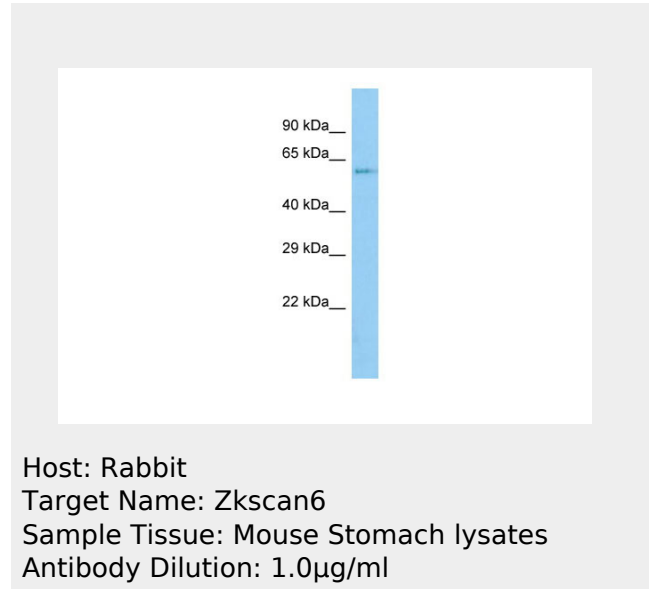


Zkscan6 Antibody - C-terminal region
Rabbit Polyclonal Antibody
Catalog # AI12834

Specification

Zkscan6 Antibody - C-terminal region - Product Information

Application	WB
Primary Accession	Q810A1
Other Accession	NM_026107 , NP_080383
Reactivity	Human, Mouse, Rat, Rabbit, Zebrafish, Pig, Horse, Bovine, Dog
Predicted	Human, Mouse, Rat, Rabbit, Zebrafish, Pig, Horse, Bovine, Dog
Host	Rabbit
Clonality	Polyclonal
Calculated MW	63kDa KDa



Zkscan6 Antibody - C-terminal region - Additional Information

Gene ID 52712

Alias Symbol	1700128E15Rik, D11Erttd714e, KOX11, Zfp535, Znf18
--------------	--

Other Names

Zinc finger protein 18, Zinc finger protein 535, Zinc finger protein with KRAB and SCAN domains 6, Znf18, Zfp535, Zkscan6

Format

Liquid. Purified antibody supplied in 1x PBS buffer with 0.09% (w/v) sodium azide and 2% sucrose.

Reconstitution & Storage

Add 50 ul of distilled water. Final anti-Zkscan6 antibody concentration is 1 mg/ml in PBS buffer with 2% sucrose. For longer periods of storage, store at 20°C. Avoid repeat freeze-thaw cycles.

Precautions

Zkscan6 Antibody - C-terminal region is for research use only and not for use in diagnostic or therapeutic procedures.

Zkscan6 Antibody - C-terminal region - Protein Information

Name Znf18

Synonyms Zfp535, Zkscan6

Function

May be involved in transcriptional regulation.

Cellular Location

Nucleus

{ECO:0000255|PROSITE-ProRule:PRU00187
}.

Zkscan6 Antibody - C-terminal region - Protocols

Provided below are standard protocols that you may find useful for product applications.

- [Western Blot](#)
- [Blocking Peptides](#)
- [Dot Blot](#)
- [Immunohistochemistry](#)
- [Immunofluorescence](#)
- [Immunoprecipitation](#)
- [Flow Cytometry](#)
- [Cell Culture](#)