

SDF4 antibody - middle region
Rabbit Polyclonal Antibody
Catalog # AI12763

Specification

SDF4 antibody - middle region - Product Information

Application	WB
Primary Accession	B1AME6
Other Accession	NM_016547 , NP_057631
Reactivity	Human, Mouse, Rat, Zebrafish, Goat, Horse, Bovine, Guinea Pig, Dog
Predicted	Human, Pig, Horse, Guinea Pig, Dog
Host	Rabbit
Clonality	Polyclonal
Calculated MW	39kDa KDa

SDF4 antibody - middle region - Additional Information

Alias Symbol	Cab45, RP5-902P8.6, SDF-4
--------------	----------------------------------

Format

Liquid. Purified antibody supplied in 1x PBS buffer with 0.09% (w/v) sodium azide and 2% sucrose.

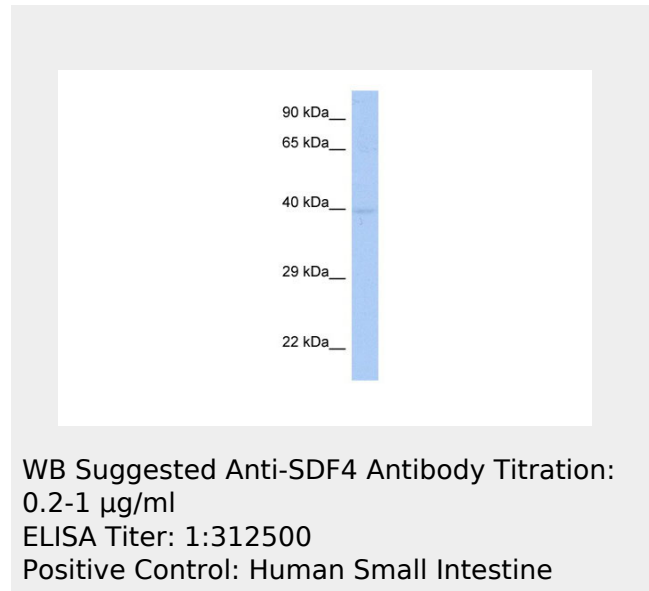
Reconstitution & Storage

Add 50 ul of distilled water. Final anti-SDF4 antibody concentration is 1 mg/ml in PBS buffer with 2% sucrose. For longer periods of storage, store at 20°C. Avoid repeat freeze-thaw cycles.

Precautions

SDF4 antibody - middle region is for research use only and not for use in diagnostic or therapeutic procedures.

SDF4 antibody - middle region - Protein Information



SDF4 antibody - middle region - References

Lam,P.P.,(2007)Mol.Biol.Cell18(7),2473-2480
econstitutionandStorage:Forshorttermuse,store at2-8Cupto1week.Forlongtermstorage,storeat-20Cin small aliquotstopreventfreeze-thawcycles.

SDF4 antibody - middle region - Protocols

Provided below are standard protocols that you may find useful for product applications.

- [Western Blot](#)
- [Blocking Peptides](#)
- [Dot Blot](#)
- [Immunohistochemistry](#)
- [Immunofluorescence](#)
- [Immunoprecipitation](#)
- [Flow Cytometry](#)
- [Cell Culture](#)