

**TMEM48 antibody - middle region**  
Rabbit Polyclonal Antibody  
Catalog # AI12668

**Specification**

**TMEM48 antibody - middle region - Product Information**

Application	<b>WB</b>
Primary Accession	<a href="#">Q9BTX1</a>
Other Accession	<a href="#">NM_018087</a> , <a href="#">NP_060557</a>
Reactivity	<b>Human, Mouse, Rat, Rabbit, Zebrafish, Horse, Bovine, Guinea Pig, Dog</b>
Predicted	<b>Human, Mouse, Rat, Rabbit, Zebrafish, Chicken, Horse, Bovine, Guinea Pig, Dog</b>
Host	<b>Rabbit</b>
Clonality	<b>Polyclonal</b>
Calculated MW	<b>76kDa KDa</b>

**TMEM48 antibody - middle region - Additional Information**

**Gene ID** 55706

Alias Symbol	<b>FLJ10407, FLJ12556, FLJ34120, NDC1, RP4-654H19.1, NET3, TMEM48</b>
--------------	---

**Other Names**

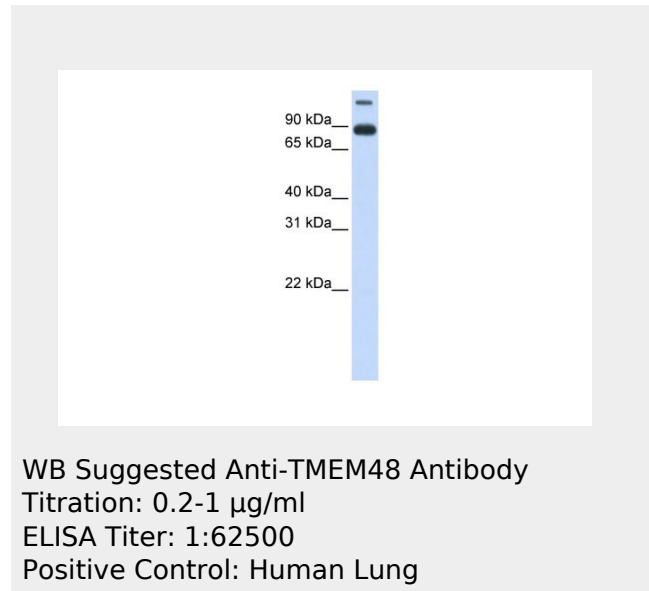
Nucleoporin NDC1, hNDC1, Transmembrane protein 48, NDC1, TMEM48

**Format**

Liquid. Purified antibody supplied in 1x PBS buffer with 0.09% (w/v) sodium azide and 2% sucrose.

**Reconstitution & Storage**

Add 50 ul of distilled water. Final anti-TMEM48 antibody concentration is 1 mg/ml in PBS buffer with 2% sucrose. For longer periods of storage, store at 20°C. Avoid repeat freeze-thaw cycles.



**TMEM48 antibody - middle region - References**

Olsen, J.V., (2006) Cell 127(3), 635-648. Reconstitution and Storage: For short term use, store at 2-8°C up to 1 week. For long term storage, store at -20°C in small aliquots to prevent freeze-thaw cycles. Publications: Tarazón, E. et al. Heart failure induces significant changes in nuclear pore complex of human cardiomyocytes. PLoS One 7, e48957 (2012). WB, Zebrafish, Human, Bovine, Dog, Horse, Rabbit, Guinea pig, Mouse, Rat 23152829

**Precautions**

TMEM48 antibody - middle region is for research use only and not for use in diagnostic or therapeutic procedures.

**TMEM48 antibody - middle region - Protein Information**

**Name** NDC1

**Synonyms** TMEM48

**Function**

Component of the nuclear pore complex (NPC), which plays a key role in de novo assembly and insertion of NPC in the nuclear envelope. Required for NPC and nuclear envelope assembly, possibly by forming a link between the nuclear envelope membrane and soluble nucleoporins, thereby anchoring the NPC in the membrane.

**Cellular Location**

Nucleus, nuclear pore complex. Nucleus membrane; Multi-pass membrane protein. Note=Central core structure of the nuclear pore complex

**TMEM48 antibody - middle region - Protocols**

Provided below are standard protocols that you may find useful for product applications.

- [Western Blot](#)
- [Blocking Peptides](#)
- [Dot Blot](#)
- [Immunohistochemistry](#)
- [Immunofluorescence](#)
- [Immunoprecipitation](#)
- [Flow Cytometry](#)
- [Cell Culture](#)