

PDE9A Antibody
Rabbit Polyclonal Antibody
Catalog # AI12618

Specification

PDE9A Antibody - Product Information

Application **IHC, WB**
 Primary Accession [O76083-13](#)
 Other Accession [NM_001001581](#),
[NP_001001581](#)
 Reactivity **Human, Mouse, Rat, Rabbit, Zebrafish, Horse, Bovine, Guinea Pig, Dog**
 Predicted **Human, Mouse, Rat, Rabbit, Pig, Horse, Bovine, Guinea Pig, Dog**
 Host **Rabbit**
 Clonality **Polyclonal**
 Calculated MW **61kDa KDa**

PDE9A Antibody - Additional Information

Alias Symbol **HSPDE9A2**
Format
 Liquid. Purified antibody supplied in 1x PBS buffer with 0.09% (w/v) sodium azide and 2% sucrose.

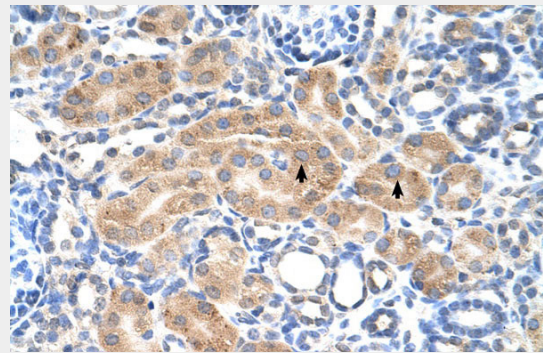
Reconstitution & Storage
 Add 50 ul of distilled water. Final anti-PDE9A antibody concentration is 1 mg/ml in PBS buffer with 2% sucrose. For longer periods of storage, store at 20°C. Avoid repeat freeze-thaw cycles.

Precautions
 PDE9A Antibody is for research use only and not for use in diagnostic or therapeutic procedures.

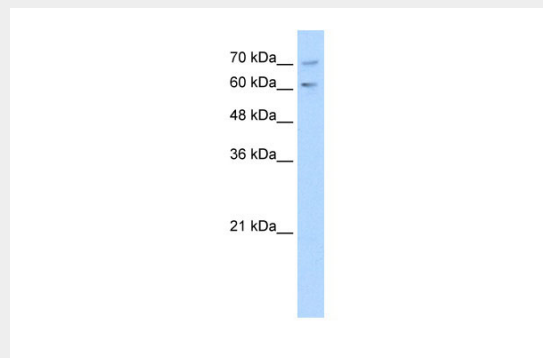
PDE9A Antibody - Protein Information

PDE9A Antibody - Protocols

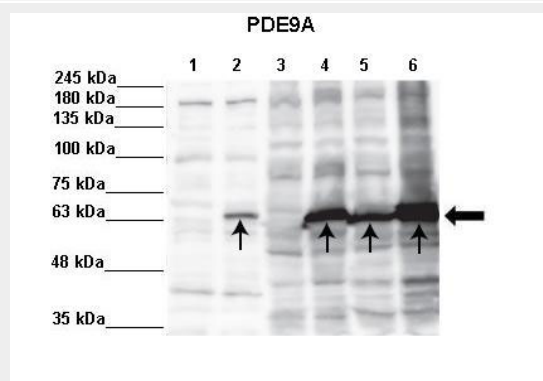
Provided below are standard protocols that you



Human kidney



WB Suggested Anti-PDE9A Antibody Titration:
1.0 µg/ml
Positive Control: Jurkat cell lysate



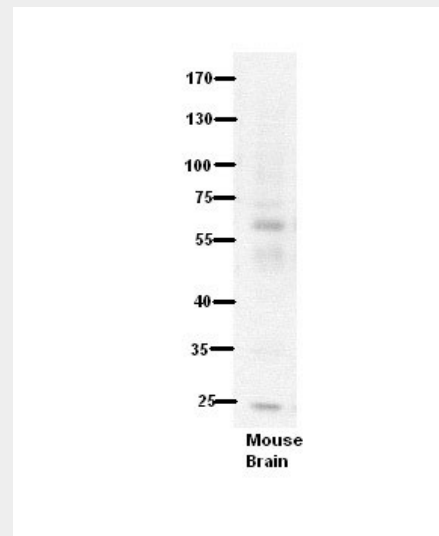
Sample Type : Lane 1: 5ug in vitro translation without DNA Lane 2: 5ug in vitro translation hNeur1-pcDNA3 Lane 3: 60ug in vitro translation rNeur1-pcDNA3 Lane 4: 60ug

may find useful for product applications.

- [Western Blot](#)
- [Blocking Peptides](#)
- [Dot Blot](#)
- [Immunohistochemistry](#)
- [Immunofluorescence](#)
- [Immunoprecipitation](#)
- [Flow Cytometry](#)
- [Cell Culture](#)

HEK293 cell lysate

(not transfected) Lane 5: 60ug hNeur1-pcDNA3 overexpressed in HEK293 cells Lane 6: 60ug rNeur1-pcDNA3 overexpressed in HEK293 cells
Primary Antibody Dilution : 1:1000
Secondary Antibody: Anti-rabbit-HRP
Secondary Antibody Dilution: 1:5000
Color/Signal Descriptions: PDE9A Gene Name: Kati Taal and Richard Tamme, Department of Gene Technology, Tallinn University of Technology.
Submitted by:



WB Suggested Anti-PDE9A Antibody Titration:
5% Milk
ELISA Titer: dilution: 1:500
Positive Control: Mouse Brain lysate

PDE9A Antibody - References

Huai, Q., (2004) Proc. Natl. Acad. Sci. U.S.A. 101(26), 9624-9629
Reconstitution and Storage: For short term use, store at 2-8°C up to 1 week. For long term storage, store at -20°C in small aliquots to prevent freeze-thaw cycles.