

**PTPRR antibody - N-terminal region**  
Rabbit Polyclonal Antibody  
Catalog # AI12570

**Specification**

**PTPRR antibody - N-terminal region - Product Information**

Application	WB
Primary Accession	<a href="#">Q7Z2V8</a>
Other Accession	<a href="#">NM_130846</a> , <a href="#">NP_570897</a>
Reactivity	Human, Mouse, Rat, Rabbit, Zebrafish, Horse, Bovine, Guinea Pig, Dog
Predicted	Human, Mouse, Rat, Rabbit, Chicken, Bovine, Guinea Pig, Dog
Host	Rabbit
Clonality	Polyclonal
Calculated MW	46kDa KDa

**PTPRR antibody - N-terminal region - Additional Information**

Alias Symbol	DKFZp781C1038, EC-PTP, FLJ34328, MGC131968, MGC148170, PCPTP1, PTP-SL, PTPBR7, PTPRQ
--------------	---

**Format**

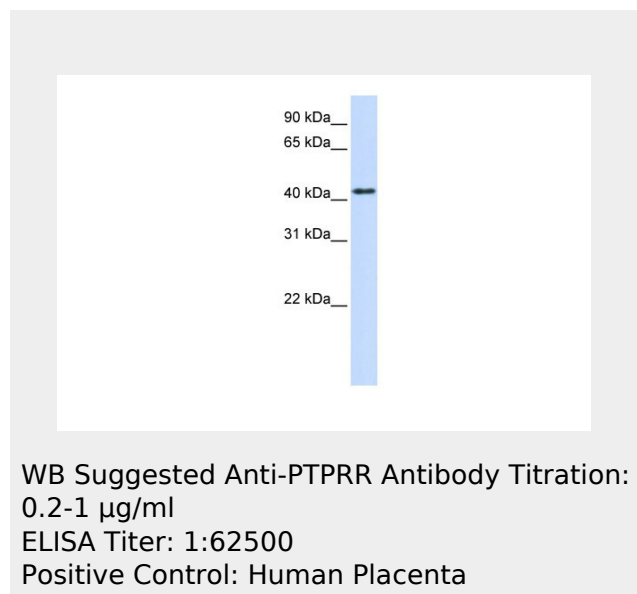
Liquid. Purified antibody supplied in 1x PBS buffer with 0.09% (w/v) sodium azide and 2% sucrose.

**Reconstitution & Storage**

Add 50 ul of distilled water. Final anti-PTPRR antibody concentration is 1 mg/ml in PBS buffer with 2% sucrose. For longer periods of storage, store at 20°C. Avoid repeat freeze-thaw cycles.

**Precautions**

PTPRR antibody - N-terminal region is for research use only and not for use in diagnostic or therapeutic procedures.



**PTPRR antibody - N-terminal region - References**

Eswaran,J.,(2006)Biochem.J.395(3),483-491Re constitutionandStorage:Forshorttermuse,storeat-2-8Cupto1week.Forlongtermstorage,storeat-20Cinsmallaliquotstopreventfreeze-thawcycles.

**PTPRR antibody - N-terminal region - Protein Information****PTPRR antibody - N-terminal region - Protocols**

Provided below are standard protocols that you may find useful for product applications.

- [Western Blot](#)
- [Blocking Peptides](#)
- [Dot Blot](#)
- [Immunohistochemistry](#)
- [Immunofluorescence](#)
- [Immunoprecipitation](#)
- [Flow Cytometry](#)
- [Cell Culture](#)