

SLC2A8 antibody - middle region
Rabbit Polyclonal Antibody
Catalog # AI12355

Specification

SLC2A8 antibody - middle region - Product Information

Application	WB
Primary Accession	Q9NY64
Other Accession	NM_014580 , NP_055395
Reactivity	Human, Rabbit
Predicted	Human, Rabbit
Host	Rabbit
Clonality	Polyclonal
Calculated MW	51kDa KDa

SLC2A8 antibody - middle region - Additional Information

Gene ID 29988

Alias Symbol	GLUT8, GLUTX1
Other Names	
Solute carrier family 2, facilitated glucose transporter member 8, Glucose transporter type 8, GLUT-8, Glucose transporter type X1, SLC2A8, GLUT8, GLUTX1	

Format

Liquid. Purified antibody supplied in 1x PBS buffer with 0.09% (w/v) sodium azide and 2% sucrose.

Reconstitution & Storage

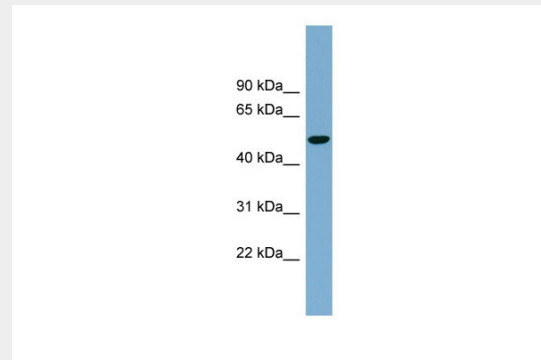
Add 50 ul of distilled water. Final anti-SLC2A8 antibody concentration is 1 mg/ml in PBS buffer with 2% sucrose. For longer periods of storage, store at 20°C. Avoid repeat freeze-thaw cycles.

Precautions

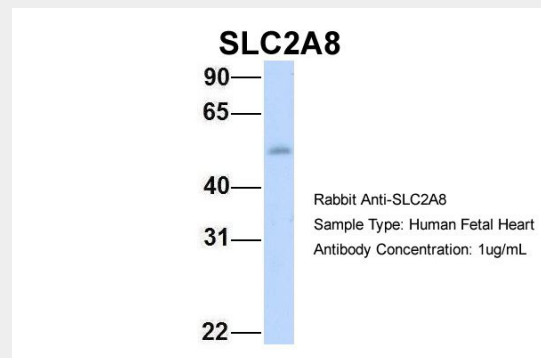
SLC2A8 antibody - middle region is for research use only and not for use in diagnostic or therapeutic procedures.

SLC2A8 antibody - middle region - Protein Information

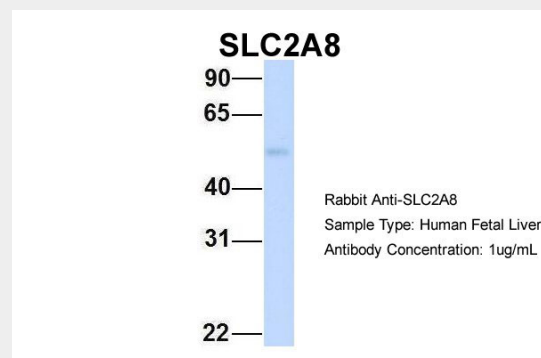
Name SLC2A8 ([HGNC:13812](#))



WB Suggested Anti-SLC2A8 Antibody Titration: 0.2-1 µg/ml
Positive Control: NCI-H226 cell lysate



Host:Rabbit
Target Name:SLC2A8
Sample Tissue:Human Fetal Heart
Antibody Dilution: 1.0µg/ml



Host:Rabbit
Target Name:SLC2A8

Function

Insulin-regulated facilitative hexose transporter that mediates the transport of glucose and fructose. Also able to mediate the transport of dehydroascorbate.

Cellular Location

Cell membrane

{ECO:0000250|UniProtKB:Q9JJZ1};

Multi-pass membrane protein. Cytoplasmic vesicle membrane

{ECO:0000250|UniProtKB:Q9JJZ1};

Multi-pass membrane protein.

Note=Principally intracellular. May move between intracellular vesicles and the plasma membrane. The dileucine internalization motif is critical for intracellular sequestration

{ECO:0000250|UniProtKB:Q9JJZ1}

Tissue Location

Highly expressed in testis, but not in testicular carcinoma. Lower amounts present in most other tissues

Sample Tissue: Human Fetal Liver
Antibody Dilution: 1.0µg/ml

**SLC2A8 antibody - middle region -
Protocols**

Provided below are standard protocols that you may find useful for product applications.

- [Western Blot](#)
- [Blocking Peptides](#)
- [Dot Blot](#)
- [Immunohistochemistry](#)
- [Immunofluorescence](#)
- [Immunoprecipitation](#)
- [Flow Cytometry](#)
- [Cell Culture](#)