

PSG5 antibody - N-terminal region
Rabbit Polyclonal Antibody
Catalog # AI12101

Specification

PSG5 antibody - N-terminal region - Product Information

Application	WB
Primary Accession	Q15238
Other Accession	NM_002781 , NP_002772
Reactivity	Human, Mouse, Rat, Horse, Dog
Predicted Host	Human
Clonality	Rabbit
Calculated MW	Polyclonal 37kDa KDa

PSG5 antibody - N-terminal region - Additional Information

Gene ID 5673

Alias Symbol	FL-NCA-3, PSG
Other Names	
Pregnancy-specific beta-1-glycoprotein 5, PS-beta-G-5, PSBG-5, Pregnancy-specific glycoprotein 5, Fetal liver non-specific cross-reactive antigen 3, FL-NCA-3, PSG5	

Format

Liquid. Purified antibody supplied in 1x PBS buffer with 0.09% (w/v) sodium azide and 2% sucrose.

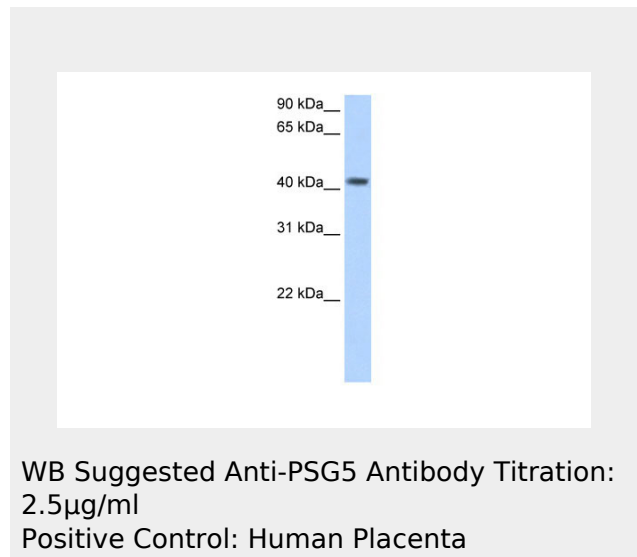
Reconstitution & Storage

Add 100 ul of distilled water. Final anti-PSG5 antibody concentration is 1 mg/ml in PBS buffer with 2% sucrose. For longer periods of storage, store at 20°C. Avoid repeat freeze-thaw cycles.

Precautions

PSG5 antibody - N-terminal region is for research use only and not for use in diagnostic or therapeutic procedures.

PSG5 antibody - N-terminal region - Protein Information



PSG5 antibody - N-terminal region - References

Blanchon, L., (2006) Biochem. Biophys. Res. Commun. 343(3), 745-753
Reconstitution and Storage: For short term use, store at 2-8°C up to 1 week. For long term storage, store at -20°C in small aliquots to prevent freeze-thaw cycles.

Name PSG5

Cellular Location
Secreted.

Tissue Location
Synthesized by syncytiotrophoblast of the placenta.

**PSG5 antibody - N-terminal region -
Protocols**

Provided below are standard protocols that you may find useful for product applications.

- [Western Blot](#)
- [Blocking Peptides](#)
- [Dot Blot](#)
- [Immunohistochemistry](#)
- [Immunofluorescence](#)
- [Immunoprecipitation](#)
- [Flow Cytometry](#)
- [Cell Culture](#)