

EGR4 antibody - C-terminal region
Rabbit Polyclonal Antibody
Catalog # AI12068

Specification

EGR4 antibody - C-terminal region - Product Information

Application	WB
Primary Accession	Q05215
Other Accession	NM_001965 , NP_001956
Reactivity	Human, Mouse, Rat, Rabbit, Zebrafish, Pig, Horse, Bovine, Guinea Pig, Dog
Predicted	Human, Mouse, Rat, Rabbit, Pig, Chicken, Horse, Bovine, Guinea Pig, Dog
Host	Rabbit
Clonality	Polyclonal
Calculated MW	51kDa KDa

EGR4 antibody - C-terminal region - Additional Information

Gene ID 1961

Alias Symbol **NGFIC, NGFI-C, PAT133**

Other Names

Early growth response protein 4, EGR-4, AT133, EGR4

Format

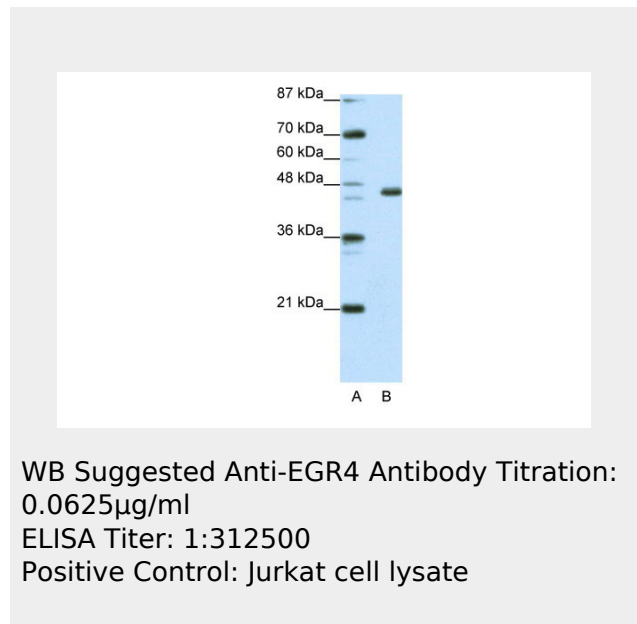
Liquid. Purified antibody supplied in 1x PBS buffer with 0.09% (w/v) sodium azide and 2% sucrose.

Reconstitution & Storage

Add 50 ul of distilled water. Final anti-EGR4 antibody concentration is 1 mg/ml in PBS buffer with 2% sucrose. For longer periods of storage, store at 20°C. Avoid repeat freeze-thaw cycles.

Precautions

EGR4 antibody - C-terminal region is for research use only and not for use in



EGR4 antibody - C-terminal region - References

Decker, E.L., (2003) Nucleic Acids Res. 31(3), 911-921. Reconstitution and Storage: For short term use, store at 2-8°C up to 1 week. For long term storage, store at -20°C in small aliquots to prevent freeze-thaw cycles.

diagnostic or therapeutic procedures.

EGR4 antibody - C-terminal region - Protein Information

Name EGR4

Function

Transcriptional regulator. Recognizes and binds to the DNA sequence 5'-GCGGGGCG-3' (GSG). Activates the transcription of target genes whose products are required for mitogenesis and differentiation (By similarity).

Cellular Location

Nucleus.

EGR4 antibody - C-terminal region - Protocols

Provided below are standard protocols that you may find useful for product applications.

- [Western Blot](#)
- [Blocking Peptides](#)
- [Dot Blot](#)
- [Immunohistochemistry](#)
- [Immunofluorescence](#)
- [Immunoprecipitation](#)
- [Flow Cytometry](#)
- [Cell Culture](#)