

KCNQ5 antibody - middle region
Rabbit Polyclonal Antibody
Catalog # AI12062

Specification

KCNQ5 antibody - middle region - Product Information

Application	WB
Primary Accession	A6PVT6
Other Accession	NM_019842 , NP_062816
Reactivity	Human, Mouse, Rat, Rabbit, Pig, Horse, Bovine, Guinea Pig, Dog
Predicted	Human, Mouse, Rabbit, Pig, Chicken, Horse, Bovine, Guinea Pig, Dog
Host	Rabbit
Clonality	Polyclonal
Calculated MW	102kDa KDa

KCNQ5 antibody - middle region - Additional Information

Alias Symbol	Kv7.5
Format	
Liquid. Purified antibody supplied in 1x PBS buffer with 0.09% (w/v) sodium azide and 2% sucrose.	

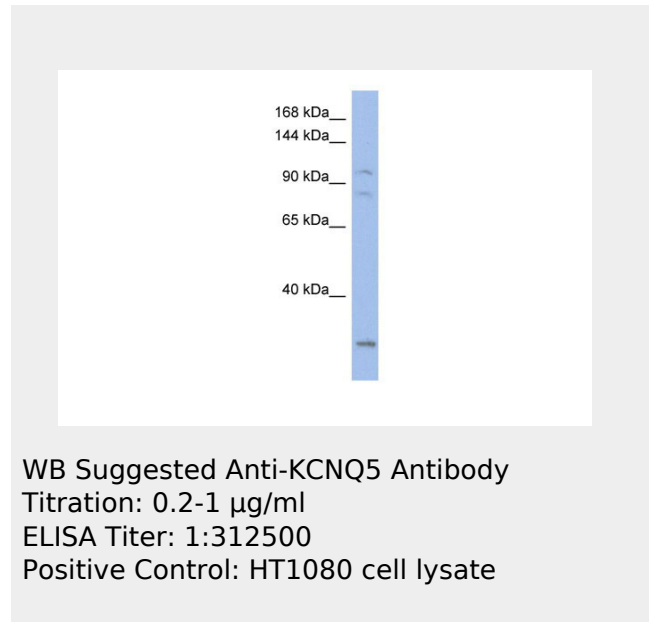
Reconstitution & Storage

Add 50 ul of distilled water. Final anti-KCNQ5 antibody concentration is 1 mg/ml in PBS buffer with 2% sucrose. For longer periods of storage, store at 20°C. Avoid repeat freeze-thaw cycles.

Precautions

KCNQ5 antibody - middle region is for research use only and not for use in diagnostic or therapeutic procedures.

KCNQ5 antibody - middle region - Protein Information



KCNQ5 antibody - middle region - References

Jensen, H.S., (2007) Biophys. J. 92(8), 2747-2756
econstitution and Storage: For short term use, store at 2-8°C up to 1 week. For long term storage, store at -20°C in small aliquots to prevent freeze-thaw cycles.

**KCNQ5 antibody - middle region -
Protocols**

Provided below are standard protocols that you may find useful for product applications.

- [Western Blot](#)
- [Blocking Peptides](#)
- [Dot Blot](#)
- [Immunohistochemistry](#)
- [Immunofluorescence](#)
- [Immunoprecipitation](#)
- [Flow Cytometry](#)
- [Cell Culture](#)