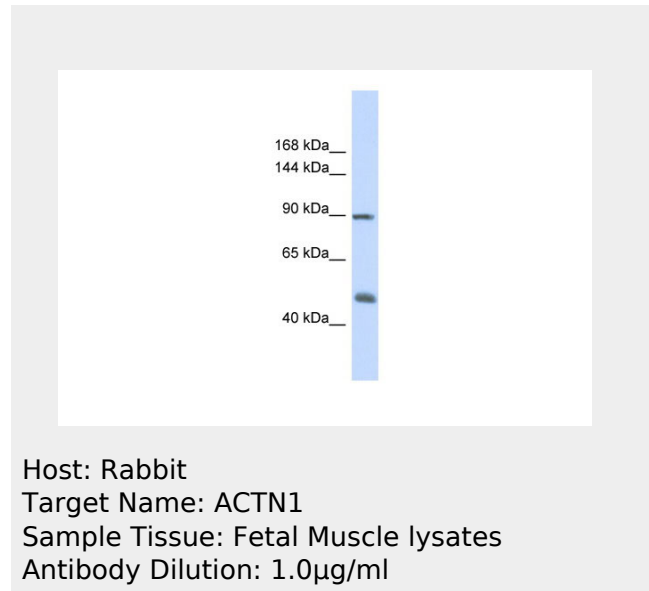


ACTN1 Antibody - middle region
Rabbit Polyclonal Antibody
Catalog # AI11960

Specification

ACTN1 Antibody - middle region - Product Information

Application	WB
Primary Accession	H9KV75
Reactivity	Human, Mouse, Rat, Rabbit, Zebrafish, Pig, Horse, Bovine, Dog
Predicted	Human, Mouse, Rat, Rabbit, Zebrafish, Pig, Bovine
Host	Rabbit
Clonality	Polyclonal
Calculated MW	90kDa KDa



ACTN1 Antibody - middle region - Additional Information

Format

Liquid. Purified antibody supplied in 1x PBS buffer with 0.09% (w/v) sodium azide and 2% sucrose.

Reconstitution & Storage

Add 50 ul of distilled water. Final anti-ACTN1 antibody concentration is 1 mg/ml in PBS buffer with 2% sucrose. For longer periods of storage, store at 20°C. Avoid repeat freeze-thaw cycles.

Precautions

ACTN1 Antibody - middle region is for research use only and not for use in diagnostic or therapeutic procedures.

ACTN1 Antibody - middle region - Protein Information

ACTN1 Antibody - middle region - Protocols

Provided below are standard protocols that you may find useful for product applications.

- [Western Blot](#)
- [Blocking Peptides](#)
- [Dot Blot](#)
- [Immunohistochemistry](#)
- [Immunofluorescence](#)
- [Immunoprecipitation](#)
- [Flow Cytometry](#)
- [Cell Culture](#)