

**MYBPC3 Antibody - C-terminal region**  
**Rabbit Polyclonal Antibody**  
**Catalog # AI11884**

**Specification**

**MYBPC3 Antibody - C-terminal region - Product Information**

|                   |  |
|-------------------|--|
| Application       | <b>WB</b>  |
| Primary Accession | <a href="#">B6D426</a>                             |
| Reactivity        | <b>Human, Mouse, Rat, Rabbit, Pig, Bovine, Dog</b> |
| Predicted         | <b>Mouse, Rat, Rabbit, Pig, Bovine</b>             |
| Host              | <b>Rabbit</b>                                      |
| Clonality         | <b>Polyclonal</b>                                  |
| Calculated MW     | <b>40kDa KDa</b>                                   |

**MYBPC3 Antibody - C-terminal region - Additional Information**

**Format**

Liquid. Purified antibody supplied in 1x PBS buffer with 0.09% (w/v) sodium azide and 2% sucrose.

**Reconstitution & Storage**

Add 50  $\mu$ l of distilled water. Final Anti-antibody concentration is 1 mg/ml in PBS buffer with 2% sucrose. For longer periods of storage, store at -20°C. Avoid repeat freeze-thaw cycles.

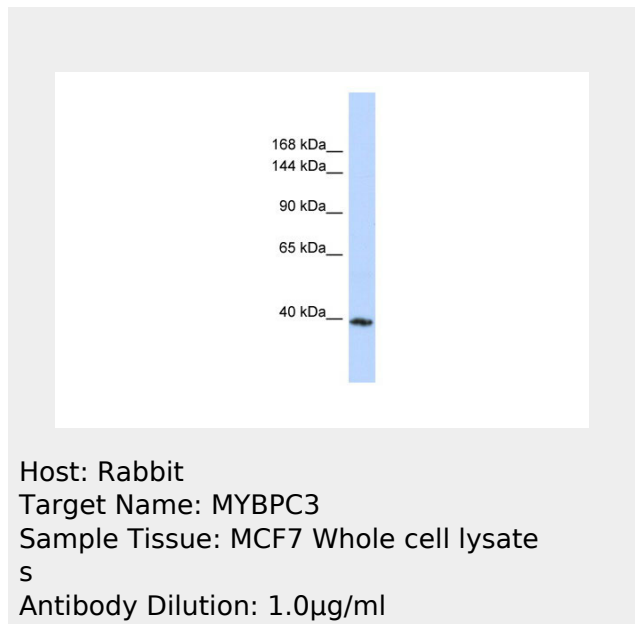
**Precautions**

MYBPC3 Antibody - C-terminal region is for research use only and not for use in diagnostic or therapeutic procedures.

**MYBPC3 Antibody - C-terminal region - Protein Information**

**MYBPC3 Antibody - C-terminal region - Protocols**

Provided below are standard protocols that you may find useful for product applications.



- [Western Blot](#)
- [Blocking Peptides](#)
- [Dot Blot](#)
- [Immunohistochemistry](#)
- [Immunofluorescence](#)
- [Immunoprecipitation](#)
- [Flow Cytometry](#)
- [Cell Culture](#)