

**ADAD2 antibody - middle region**  
**Rabbit Polyclonal Antibody**  
Catalog # AI11845

**Specification**

**ADAD2 antibody - middle region - Product Information**

Application	WB
Primary Accession	<a href="#">Q8NCV1</a>
Other Accession	<a href="#">NM_139174</a> , <a href="#">NP_631913</a>
Reactivity	Human, Mouse, Rat, Rabbit, Pig, Horse, Bovine, Dog
Predicted	Human, Rabbit, Horse, Bovine
Host	Rabbit
Clonality	Polyclonal
Calculated MW	71kDa KDa

**ADAD2 antibody - middle region - Additional Information**

**Gene ID** 161931

**Alias Symbol** **FLJ00337, TENRL**  
**Other Names**

Adenosine deaminase domain-containing protein 2, Testis nuclear RNA-binding protein-like, ADAD2, TENRL

**Format**

Liquid. Purified antibody supplied in 1x PBS buffer with 0.09% (w/v) sodium azide and 2% sucrose.

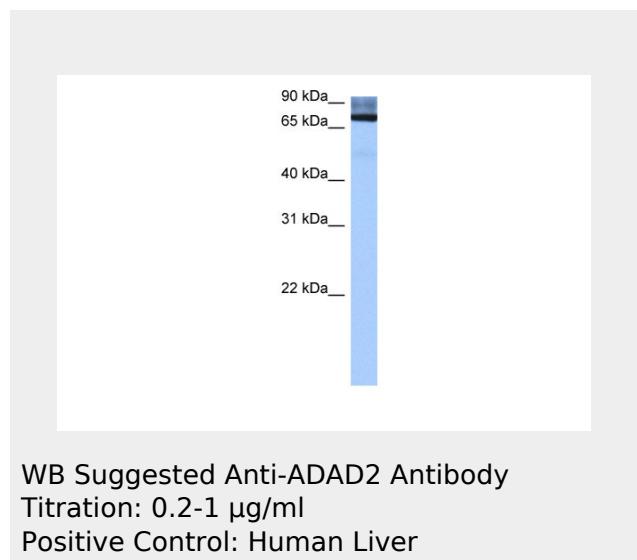
**Reconstitution & Storage**

Add 50 ul of distilled water. Final anti-ADAD2 antibody concentration is 1 mg/ml in PBS buffer with 2% sucrose. For longer periods of storage, store at 20°C. Avoid repeat freeze-thaw cycles.

**Precautions**

ADAD2 antibody - middle region is for research use only and not for use in diagnostic or therapeutic procedures.

**ADAD2 antibody - middle region - Protein**



**ADAD2 antibody - middle region - References**

Ota,T., (2004) Nat. Genet. 36 (1), 40-45  
Reconstitution and Storage:For short term use, store at 2-8C up to 1 week. For long term storage, store at -20C in small aliquots to prevent freeze-thaw cycles.

**Information****Name** ADAD2**Synonyms** TENRL**ADAD2 antibody - middle region -  
Protocols**

Provided below are standard protocols that you may find useful for product applications.

- [Western Blot](#)
- [Blocking Peptides](#)
- [Dot Blot](#)
- [Immunohistochemistry](#)
- [Immunofluorescence](#)
- [Immunoprecipitation](#)
- [Flow Cytometry](#)
- [Cell Culture](#)