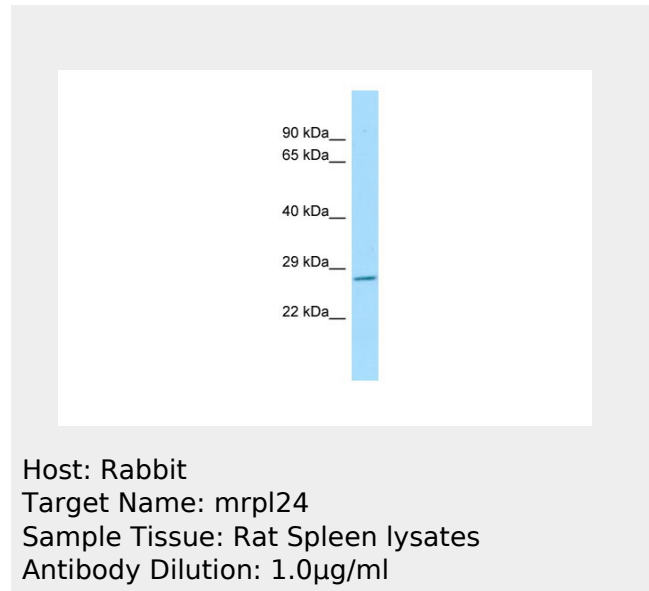


mrpl24 Antibody - C-terminal region
Rabbit Polyclonal Antibody
Catalog # AI11836

Specification

mrpl24 Antibody - C-terminal region - Product Information

Application	WB
Primary Accession	Q66H47
Other Accession	NM_001007637 , NP_001007638
Reactivity	Human, Mouse, Rat, Rabbit, Zebrafish, Pig, Horse, Bovine, Dog
Predicted	Human, Mouse, Rat, Pig, Horse, Bovine, Dog
Host	Rabbit
Clonality	Polyclonal
Calculated MW	23kDa KDa



mrpl24 Antibody - C-terminal region - Additional Information

Gene ID 295224

Alias Symbol **MGC94307**
Other Names
39S ribosomal protein L24, mitochondrial, L24mt, MRP-L24, Mrpl24

Format

Liquid. Purified antibody supplied in 1x PBS buffer with 0.09% (w/v) sodium azide and 2% sucrose.

Reconstitution & Storage

Add 50 ul of distilled water. Final anti-mrpl24 antibody concentration is 1 mg/ml in PBS buffer with 2% sucrose. For longer periods of storage, store at 20°C. Avoid repeat freeze-thaw cycles.

Precautions

mrpl24 Antibody - C-terminal region is for research use only and not for use in diagnostic or therapeutic procedures.

mrpl24 Antibody - C-terminal region - Protein Information

Name Mrpl24

Cellular Location

Mitochondrion
{ECO:0000250|UniProtKB:Q96A35}.

mrpl24 Antibody - C-terminal region - Protocols

Provided below are standard protocols that you may find useful for product applications.

- [Western Blot](#)
- [Blocking Peptides](#)
- [Dot Blot](#)
- [Immunohistochemistry](#)
- [Immunofluorescence](#)
- [Immunoprecipitation](#)
- [Flow Cytometry](#)
- [Cell Culture](#)