

PCBP4 antibody - middle region
Rabbit Polyclonal Antibody
 Catalog # AI11823

Specification

PCBP4 antibody - middle region - Product Information

Application	WB
Primary Accession	Q9HCU2
Other Accession	NM_033009 , NP_127502
Reactivity	Human, Mouse, Rat, Rabbit, Pig, Horse, Bovine, Dog
Predicted	Human, Mouse, Rat, Rabbit, Bovine, Dog
Host	Rabbit
Clonality	Polyclonal
Calculated MW	41kDa KDa

PCBP4 antibody - middle region - Additional Information

Alias Symbol	CBP, LIP4, MCG10
Format	
Liquid. Purified antibody supplied in 1x PBS buffer with 0.09% (w/v) sodium azide and 2% sucrose.	

Reconstitution & Storage

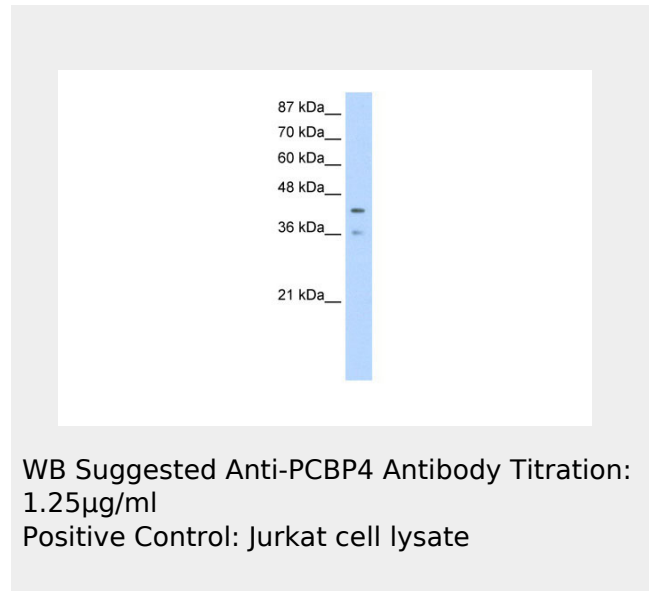
Add 100 ul of distilled water. Final anti-PCBP4 antibody concentration is 1 mg/ml in PBS buffer with 2% sucrose. For longer periods of storage, store at 20°C. Avoid repeat freeze-thaw cycles.

Precautions

PCBP4 antibody - middle region is for research use only and not for use in diagnostic or therapeutic procedures.

PCBP4 antibody - middle region - Protein Information

PCBP4 antibody - middle region - Protocols



PCBP4 antibody - middle region - References

Chkheidze, A.N. (2003) Mol. Cell. Biol. 23 (23), 8405-8415
 Reconstitution and Storage: For short term use, store at 2-8C up to 1 week. For long term storage, store at -20C in small aliquots to prevent freeze-thaw cycles.

Provided below are standard protocols that you may find useful for product applications.

- [Western Blot](#)
- [Blocking Peptides](#)
- [Dot Blot](#)
- [Immunohistochemistry](#)
- [Immunofluorescence](#)
- [Immunoprecipitation](#)
- [Flow Cytometry](#)
- [Cell Culture](#)