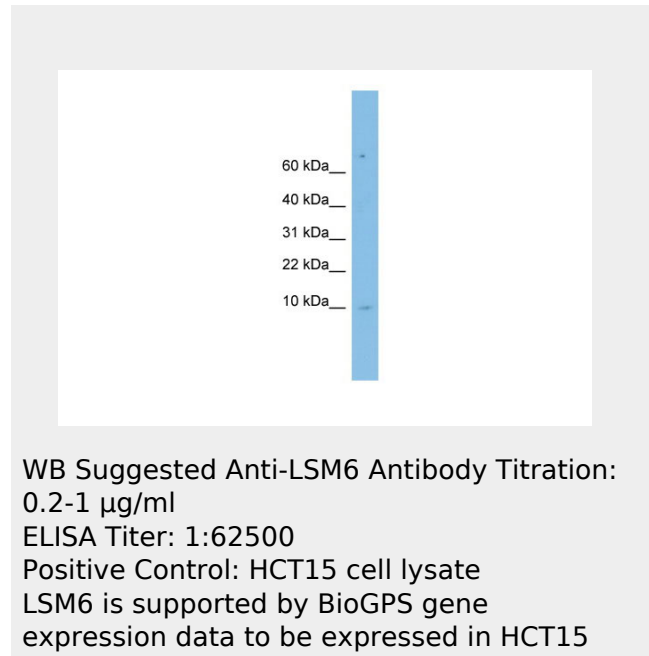


**LSM6 antibody - middle region**  
**Rabbit Polyclonal Antibody**  
 Catalog # AI11787

**Specification**

**LSM6 antibody - middle region - Product Information**

Application	<b>WB</b>
Primary Accession	<a href="#">P62312</a>
Other Accession	<a href="#">NM_007080</a> , <a href="#">NP_009011</a>
Reactivity	<b>Human, Mouse, Rat, Rabbit, Zebrafish, Pig, Horse, Yeast, Bovine, Dog</b>
Predicted	<b>Human, Mouse, Rat, Zebrafish, Chicken, Bovine, Dog</b>
Host	<b>Rabbit</b>
Clonality	<b>Polyclonal</b>
Calculated MW	<b>9kDa KDa</b>



**LSM6 antibody - middle region - Additional Information**

**Gene ID 11157**

Alias Symbol **YDR378°C**  
**Other Names**  
 U6 snRNA-associated Sm-like protein LSm6,  
 LSM6

**Format**  
 Liquid. Purified antibody supplied in 1x PBS buffer with 0.09% (w/v) sodium azide and 2% sucrose.

**Reconstitution & Storage**  
 Add 50 ul of distilled water. Final anti-LSM6 antibody concentration is 1 mg/ml in PBS buffer with 2% sucrose. For longer periods of storage, store at 20°C. Avoid repeat freeze-thaw cycles.

**Precautions**  
 LSM6 antibody - middle region is for research use only and not for use in diagnostic or therapeutic procedures.

**LSM6 antibody - middle region - Protein Information****Name** LSM6**Function**

Plays role in pre-mRNA splicing as component of the U4/U6-U5 tri-snRNP complex that is involved in spliceosome assembly, and as component of the precatalytic spliceosome (spliceosome B complex) (PubMed:<a href="http://www.uniprot.org/citations/28781166" target="\_blank">28781166</a>). The heptameric LSM2-8 complex binds specifically to the 3'-terminal U-tract of U6 snRNA (PubMed:<a href="http://www.uniprot.org/citations/10523320" target="\_blank">10523320</a>). Component of LSm protein complexes, which are involved in RNA processing and may function in a chaperone-like manner, facilitating the efficient association of RNA processing factors with their substrates. Component of the cytoplasmic LSM1-LSM7 complex, which is thought to be involved in mRNA degradation by activating the decapping step in the 5'-to-3' mRNA decay pathway (Probable).

**Cellular Location**

Cytoplasm. Nucleus

**LSM6 antibody - middle region - Protocols**

Provided below are standard protocols that you may find useful for product applications.

- [Western Blot](#)
- [Blocking Peptides](#)
- [Dot Blot](#)
- [Immunohistochemistry](#)
- [Immunofluorescence](#)
- [Immunoprecipitation](#)
- [Flow Cytometry](#)
- [Cell Culture](#)