

GIPC1 antibody - N-terminal region
Rabbit Polyclonal Antibody
Catalog # AI11773

Specification

GIPC1 antibody - N-terminal region - Product Information

Application	WB
Primary Accession	O14908
Other Accession	NM_202470 , NP_974199
Reactivity	Human, Mouse, Rat, Zebrafish, Bovine, Dog
Predicted	Human, Mouse, Rat, Zebrafish, Bovine, Dog
Host	Rabbit
Clonality	Polyclonal
Calculated MW	37kDa KDa

GIPC1 antibody - N-terminal region - Additional Information

Gene ID 10755

Alias Symbol	NIP, GIPC, IIP-1, TIP-2, SEMCAP, C19orf3, Hs.6454, GLUT1CBP, RGS19IP1, SYNECTIN, SYNECTIIN
--------------	---

Other Names

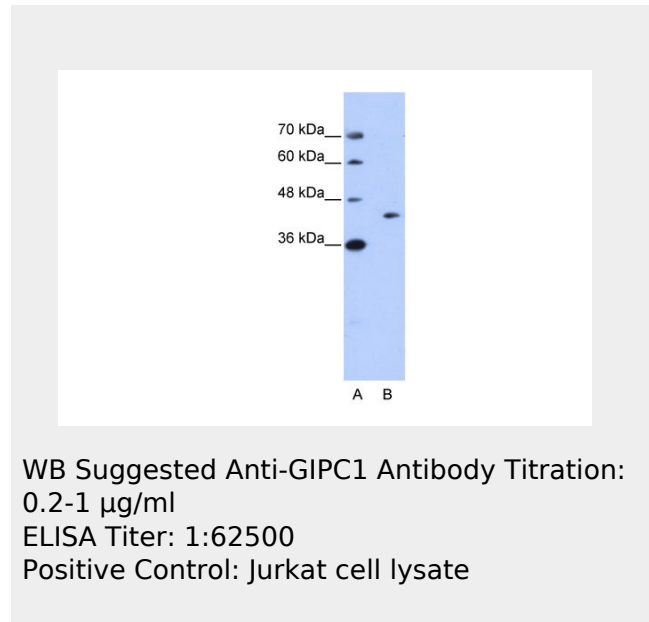
PDZ domain-containing protein GIPC1, GAIP C-terminus-interacting protein, RGS-GAIP-interacting protein, RGS19-interacting protein 1, Synectin, Tax interaction protein 2, TIP-2, GIPC1, C19orf3, GIPC, RGS19IP1

Format

Liquid. Purified antibody supplied in 1x PBS buffer with 0.09% (w/v) sodium azide and 2% sucrose.

Reconstitution & Storage

Add 50 ul of distilled water. Final anti-GIPC1 antibody concentration is 1 mg/ml in PBS buffer with 2% sucrose. For longer periods of storage, store at 20°C. Avoid repeat



GIPC1 antibody - N-terminal region - References

Repetto,S., (2005) Biochem. Biophys. Res. Commun. 337 (3), 849-852
Reconstitution and Storage:For short term use, store at 2-8C up to 1 week. For long term storage, store at -20C in small aliquots to prevent freeze-thaw cycles.

freeze-thaw cycles.

Precautions

GIPC1 antibody - N-terminal region is for research use only and not for use in diagnostic or therapeutic procedures.

GIPC1 antibody - N-terminal region - Protein Information

Name GIPC1

Synonyms C19orf3, GIPC, RGS19IP1

Function

May be involved in G protein-linked signaling.

Cellular Location

Cytoplasm. Membrane; Peripheral membrane protein

Tissue Location

Widely expressed (PubMed:9770488).
Expressed in skeletal muscle (at protein level) (PubMed:32413282)

GIPC1 antibody - N-terminal region - Protocols

Provided below are standard protocols that you may find useful for product applications.

- [Western Blot](#)
- [Blocking Peptides](#)
- [Dot Blot](#)
- [Immunohistochemistry](#)
- [Immunofluorescence](#)
- [Immunoprecipitation](#)
- [Flow Cytometry](#)
- [Cell Culture](#)