

ZNF397 antibody - C-terminal region
Rabbit Polyclonal Antibody
Catalog # AI11601

Specification

ZNF397 antibody - C-terminal region - Product Information

| | |
|-------------------|--|
| Application | IHC, WB |
| Primary Accession | Q8NF99-2 |
| Other Accession | NM_032347 , NP_115723 |
| Reactivity | Human |
| Predicted | Human |
| Host | Rabbit |
| Clonality | Polyclonal |
| Calculated MW | 31kDa KDa |

ZNF397 antibody - C-terminal region - Additional Information

Alias Symbol **ZNF47, ZSCAN15**
Format

Liquid. Purified antibody supplied in 1x PBS buffer with 0.09% (w/v) sodium azide and 2% sucrose.

Reconstitution & Storage

Add 100 ul of distilled water. Final anti-ZNF397 antibody concentration is 1 mg/ml in PBS buffer with 2% sucrose. For longer periods of storage, store at 20°C. Avoid repeat freeze-thaw cycles.

Precautions

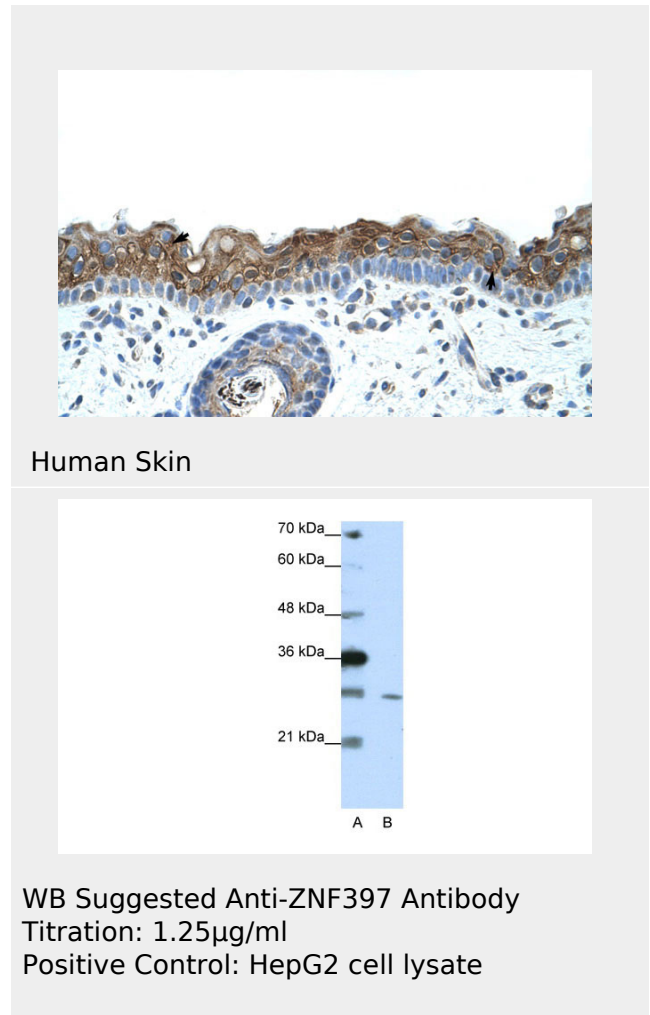
ZNF397 antibody - C-terminal region is for research use only and not for use in diagnostic or therapeutic procedures.

ZNF397 antibody - C-terminal region - Protein Information

ZNF397 antibody - C-terminal region - Protocols

Provided below are standard protocols that you may find useful for product applications.

- [Western Blot](#)



ZNF397 antibody - C-terminal region - References

Wu,Y., Gene 310, 193-201 (2003)Reconstitution and Storage:For short term use, store at 2-8C up to 1 week. For long term storage, store at -20C in small aliquots to prevent freeze-thaw cycles.

- [Blocking Peptides](#)
- [Dot Blot](#)
- [Immunohistochemistry](#)
- [Immunofluorescence](#)
- [Immunoprecipitation](#)
- [Flow Cytometry](#)
- [Cell Culture](#)