

**CORO1A antibody - N-terminal region**  
Rabbit Polyclonal Antibody  
Catalog # AI11473

**Specification**

**CORO1A antibody - N-terminal region - Product Information**

Application	<b>WB</b>
Primary Accession	<a href="#">Q2YD73</a>
Other Accession	<a href="#">NM_007074</a> , <a href="#">NP_009005</a>
Reactivity	<b>Human, Mouse, Rat, Rabbit, Zebrafish, Pig, Horse, Bovine, Dog</b>
Predicted	<b>Human, Mouse, Zebrafish, Pig, Horse, Dog</b>
Host	<b>Rabbit</b>
Clonality	<b>Polyclonal</b>
Calculated MW	<b>51kDa KDa</b>

**CORO1A antibody - N-terminal region - Additional Information**

Alias Symbol	<b>p57, TACO, CLABP, HCORO1, CLIPINA</b>
--------------	--

**Format**

Liquid. Purified antibody supplied in 1x PBS buffer with 0.09% (w/v) sodium azide and 2% sucrose.

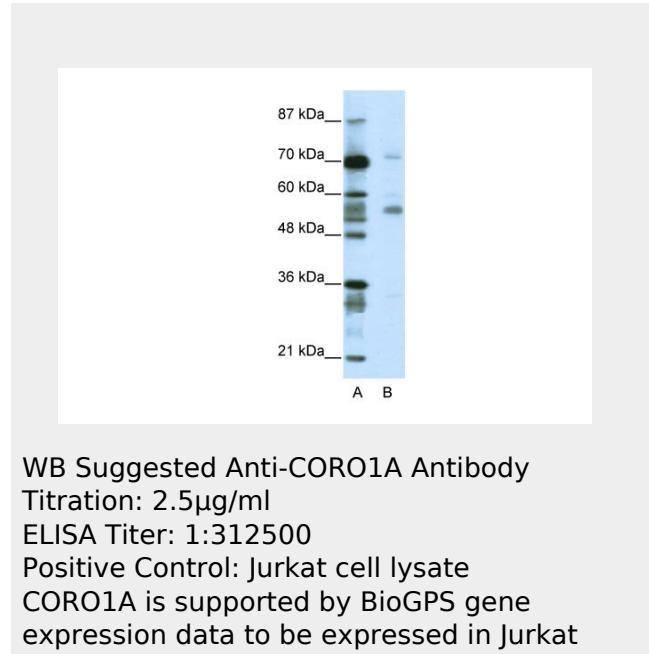
**Reconstitution & Storage**

Add 100 ul of distilled water. Final anti-CORO1A antibody concentration is 1 mg/ml in PBS buffer with 2% sucrose. For longer periods of storage, store at 20°C. Avoid repeat freeze-thaw cycles.

**Precautions**

CORO1A antibody - N-terminal region is for research use only and not for use in diagnostic or therapeutic procedures.

**CORO1A antibody - N-terminal region - Protein Information**



**CORO1A antibody - N-terminal region - References**

Anand,P.K. (2005) FEMS Microbiol. Lett. 250 (1), 137-144  
Reconstitution and Storage:For short term use, store at 2-8C up to 1 week. For long term storage, store at -20C in small aliquots to prevent freeze-thaw cycles.

**CORO1A antibody - N-terminal region -  
Protocols**

Provided below are standard protocols that you may find useful for product applications.

- [Western Blot](#)
- [Blocking Peptides](#)
- [Dot Blot](#)
- [Immunohistochemistry](#)
- [Immunofluorescence](#)
- [Immunoprecipitation](#)
- [Flow Cytometry](#)
- [Cell Culture](#)