

**ARID3A antibody - N-terminal region**  
Rabbit Polyclonal Antibody  
Catalog # AI11434

**Specification**

**ARID3A antibody - N-terminal region - Product Information**

Application	<b>WB</b>
Primary Accession	<a href="#">Q99856</a>
Other Accession	<a href="#">NM_005224</a> , <a href="#">NP_005215</a>
Reactivity	<b>Human, Mouse, Rat, Pig, Goat, Bovine, Dog</b>
Predicted	<b>Mouse, Rat, Bovine</b>
Host	<b>Rabbit</b>
Clonality	<b>Polyclonal</b>
Calculated MW	<b>63kDa KDa</b>

**ARID3A antibody - N-terminal region - Additional Information**

**Gene ID 1820**

Alias Symbol	<b>BRIGHT, DRIL1, DRIL3, E2FBP1</b>
--------------	-------------------------------------

**Other Names**

AT-rich interactive domain-containing protein 3A, ARID domain-containing protein 3A, B-cell regulator of IgH transcription, Bright, Dead ringer-like protein 1, E2F-binding protein 1, ARID3A, DRIL1, DRIL3, DRX, E2FBP1

**Format**

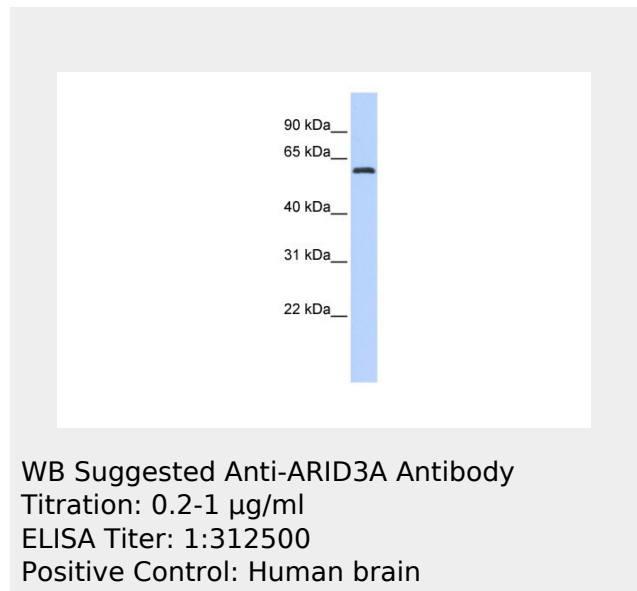
Liquid. Purified antibody supplied in 1x PBS buffer with 0.09% (w/v) sodium azide and 2% sucrose.

**Reconstitution & Storage**

Add 50 ul of distilled water. Final anti-ARID3A antibody concentration is 1 mg/ml in PBS buffer with 2% sucrose. For longer periods of storage, store at 20°C. Avoid repeat freeze-thaw cycles.

**Precautions**

ARID3A antibody - N-terminal region is for research use only and not for use in diagnostic or therapeutic procedures.



**ARID3A antibody - N-terminal region - References**

Lin,D., (er) Mol. Cancer 6, 23 (2007)Reconstitution and Storage:For short term use, store at 2-8C up to 1 week. For long term storage, store at -20C in small aliquots to prevent freeze-thaw cycles.

**ARID3A antibody - N-terminal region - Protein Information****Name** ARID3A**Synonyms** DRIL1, DRIL3, DRX, E2FBP1**Function**

Transcription factor which may be involved in the control of cell cycle progression by the RB1/E2F1 pathway and in B-cell differentiation.

**Cellular Location**

Nucleus

{ECO:0000255|PROSITE-ProRule:PRU00355, ECO:0000269|PubMed:17400556}.

Cytoplasm Note=Shuttles between nucleus and cytoplasm

**Tissue Location**

Widely expressed, with highest expression in skeletal muscle, thalamus, and colon

**ARID3A antibody - N-terminal region - Protocols**

Provided below are standard protocols that you may find useful for product applications.

- [Western Blot](#)
- [Blocking Peptides](#)
- [Dot Blot](#)
- [Immunohistochemistry](#)
- [Immunofluorescence](#)
- [Immunoprecipitation](#)
- [Flow Cytometry](#)
- [Cell Culture](#)