

ZNF140 Antibody - C-terminal region
Rabbit Polyclonal Antibody
Catalog # AI11303

Specification

ZNF140 Antibody - C-terminal region - Product Information

Application	WB
Primary Accession	Q05CP6
Reactivity	Human, Mouse, Rat, Rabbit, Pig, Horse, Bovine, Dog
Predicted	Human, Mouse, Rat, Rabbit, Pig, Horse, Bovine, Dog
Host	Rabbit
Clonality	Polyclonal
Calculated MW	38kDa KDa

ZNF140 Antibody - C-terminal region - Additional Information

Format

Liquid. Purified antibody supplied in 1x PBS buffer with 0.09% (w/v) sodium azide and 2% sucrose.

Reconstitution & Storage

Add 50 μ l of distilled water. Final Anti-ZNF140 antibody concentration is 1 mg/ml in PBS buffer with 2% sucrose. For longer periods of storage, store at -20°C. Avoid repeat freeze-thaw cycles.

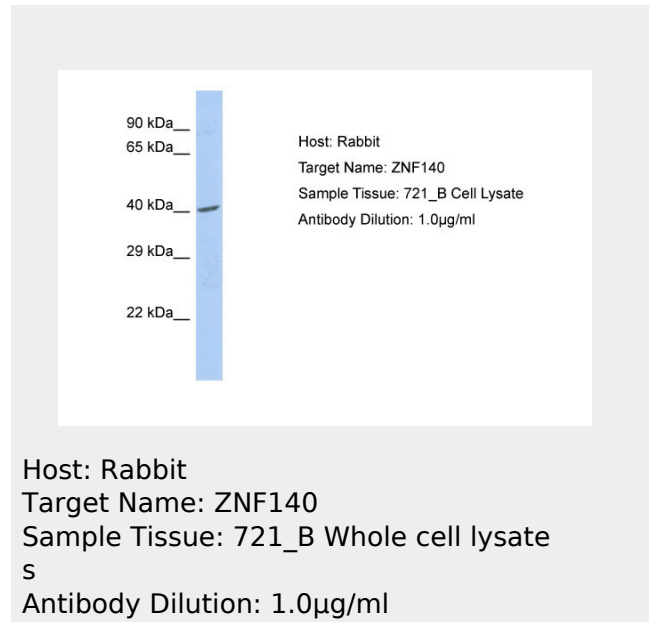
Precautions

ZNF140 Antibody - C-terminal region is for research use only and not for use in diagnostic or therapeutic procedures.

ZNF140 Antibody - C-terminal region - Protein Information

ZNF140 Antibody - C-terminal region - Protocols

Provided below are standard protocols that you



may find useful for product applications.

- [Western Blot](#)
- [Blocking Peptides](#)
- [Dot Blot](#)
- [Immunohistochemistry](#)
- [Immunofluorescence](#)
- [Immunoprecipitation](#)
- [Flow Cytometry](#)
- [Cell Culture](#)