

Use1 antibody - N-terminal region
Rabbit Polyclonal Antibody
Catalog # AI11192

Specification

Use1 antibody - N-terminal region - Product Information

Application	WB
Primary Accession	Q9CQ56
Other Accession	NM_025917 , NP_080193
Reactivity	Mouse, Rat
Predicted	Mouse, Rat
Host	Rabbit
Clonality	Polyclonal
Calculated MW	30kDa KDa

Use1 antibody - N-terminal region - Additional Information

Gene ID 67023

Alias Symbol	D12, Ed2, p31, Q-snare, AV002165, 2010315L10Rik, 5730403H22Rik
--------------	--

Other Names

Vesicle transport protein USE1, Protein D12, USE1-like protein, Use1, Use1l

Format

Liquid. Purified antibody supplied in 1x PBS buffer with 0.09% (w/v) sodium azide and 2% sucrose.

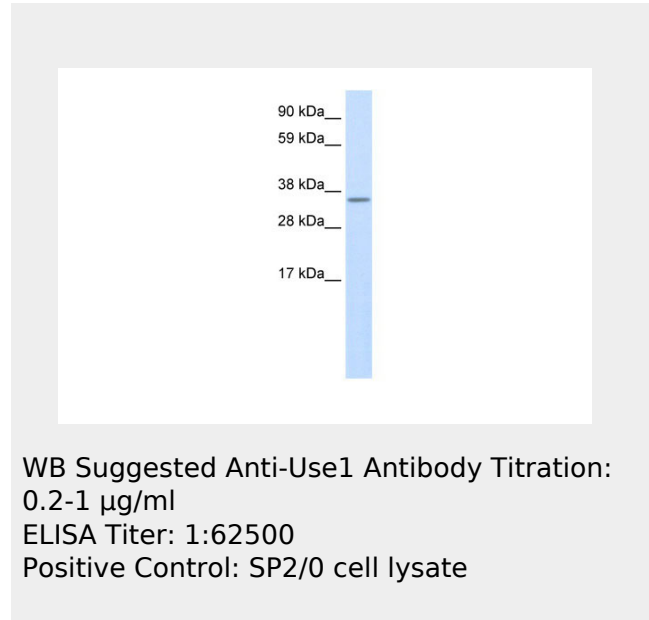
Reconstitution & Storage

Add 50 ul of distilled water. Final anti-Use1 antibody concentration is 1 mg/ml in PBS buffer with 2% sucrose. For longer periods of storage, store at 20°C. Avoid repeat freeze-thaw cycles.

Precautions

Use1 antibody - N-terminal region is for research use only and not for use in diagnostic or therapeutic procedures.

Use1 antibody - N-terminal region - Protein Information



Use1 antibody - N-terminal region - References

Tanaka, T.S., et al., (2000) Proc. Natl. Acad. Sci. U.S.A. 97 (16), 9127-9132
Reconstitution and Storage: For short term use, store at 2-8C up to 1 week. For long term storage, store at -20C in small aliquots to prevent freeze-thaw cycles.

Name Use1**Synonyms Use1I****Function**

SNARE that may be involved in targeting and fusion of Golgi- derived retrograde transport vesicles with the ER.

Cellular Location

Endoplasmic reticulum membrane;
Single-pass type IV membrane protein

**Use1 antibody - N-terminal region -
Protocols**

Provided below are standard protocols that you may find useful for product applications.

- [Western Blot](#)
- [Blocking Peptides](#)
- [Dot Blot](#)
- [Immunohistochemistry](#)
- [Immunofluorescence](#)
- [Immunoprecipitation](#)
- [Flow Cytometry](#)
- [Cell Culture](#)