

**CITED4 antibody - N-terminal region**  
**Rabbit Polyclonal Antibody**  
**Catalog # AI11165**

**Specification**

**CITED4 antibody - N-terminal region - Product Information**

Application	<b>WB</b>
Primary Accession	<a href="#">Q9WUL8</a>
Other Accession	<a href="#">NM_019563</a> , <a href="#">NP_062509</a>
Reactivity	<b>Mouse, Rat</b>
Predicted	<b>Mouse</b>
Host	<b>Rabbit</b>
Clonality	<b>Polyclonal</b>
Calculated MW	<b>20kDa KDa</b>

**CITED4 antibody - N-terminal region - Additional Information**

**Gene ID 56222**

Alias Symbol **Mrg2, MRG-2**

**Other Names**

Cbp/p300-interacting transactivator 4, MSG1-related protein 2, MRG-2, Cited4 {ECO:0000312|MGI:MGI:1861694}

**Format**

Liquid. Purified antibody supplied in 1x PBS buffer with 0.09% (w/v) sodium azide and 2% sucrose.

**Reconstitution & Storage**

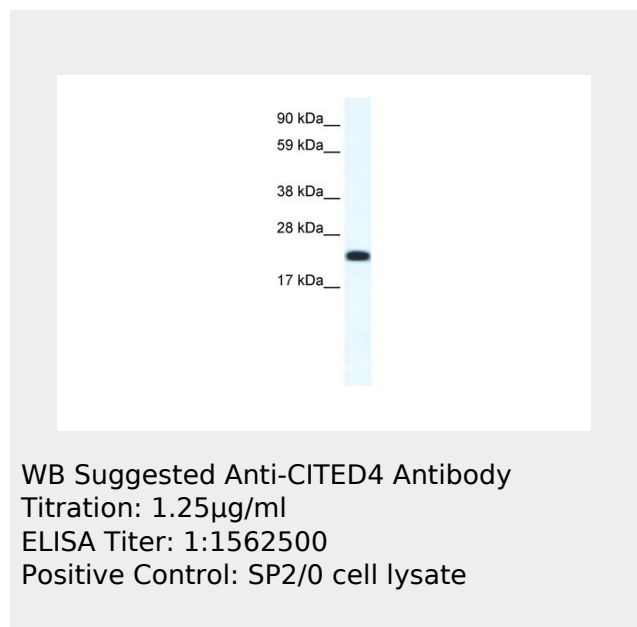
Add 100 ul of distilled water. Final anti-CITED4 antibody concentration is 1 mg/ml in PBS buffer with 2% sucrose. For longer periods of storage, store at 20°C. Avoid repeat freeze-thaw cycles.

**Precautions**

CITED4 antibody - N-terminal region is for research use only and not for use in diagnostic or therapeutic procedures.

**CITED4 antibody - N-terminal region - Protein Information**

**Name** Cited4  
{ECO:0000312|MGI:MGI:1861694}



**CITED4 antibody - N-terminal region - References**

Blackshaw,S., et al., (2004) PLoS Biol. 2 (9), E247  
Reconstitution and Storage:For short term use, store at 2-8C up to 1 week. For long term storage, store at -20C in small aliquots to prevent freeze-thaw cycles.

**Function**

Acts as transcriptional coactivator for TFAP2/AP-2. Enhances estrogen-dependent transactivation mediated by estrogen receptors. May function as an inhibitor of transactivation by HIF1A by disrupting HIF1A interaction with CREBBP. May be involved in regulation of gene expression during development and differentiation of blood cells, endothelial cells and mammary epithelial cells.

**Cellular Location**

Nucleus. Cytoplasm  
{ECO:0000250|UniProtKB:Q96RK1}

**Tissue Location**

Strongly expressed in heart, spleen and testis, and weakly in liver and kidney.

**CITED4 antibody - N-terminal region -  
Protocols**

Provided below are standard protocols that you may find useful for product applications.

- [Western Blot](#)
- [Blocking Peptides](#)
- [Dot Blot](#)
- [Immunohistochemistry](#)
- [Immunofluorescence](#)
- [Immunoprecipitation](#)
- [Flow Cytometry](#)
- [Cell Culture](#)