

Sfpi1 Antibody - N-terminal region
Rabbit Polyclonal Antibody
Catalog # AI11133

Specification

Sfpi1 Antibody - N-terminal region - Product Information

Application	WB
Primary Accession	P17433
Other Accession	NM_011355 , NP_035485
Reactivity	Mouse, Rat
Predicted	Mouse, Rat
Host	Rabbit
Clonality	Polyclonal
Calculated MW	31kDa KDa

Sfpi1 Antibody - N-terminal region - Additional Information

Gene ID 20375

Alias Symbol	Dis-1, Dis1, PU.1, Sfpi-1, Spi-1, Spi1, Tcfpu1, Tfpu.1, Sfpi1
--------------	--

Other Names

Transcription factor PU.1, 31 kDa-transforming protein, SFFV proviral integration 1 protein, Spi1, Sfpi-1, Sfpi1

Format

Liquid. Purified antibody supplied in 1x PBS buffer with 0.09% (w/v) sodium azide and 2% sucrose.

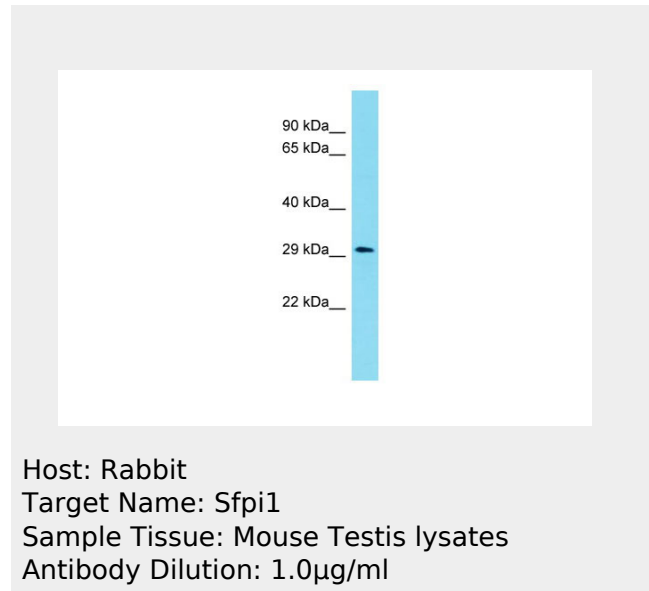
Reconstitution & Storage

Add 50 ul of distilled water. Final anti-Sfpi1 antibody concentration is 1 mg/ml in PBS buffer with 2% sucrose. For longer periods of storage, store at 20°C. Avoid repeat freeze-thaw cycles.

Precautions

Sfpi1 Antibody - N-terminal region is for research use only and not for use in diagnostic or therapeutic procedures.

Sfpi1 Antibody - N-terminal region - Protein Information



Name Spi1

Synonyms Sfp1-1, Sfp1

Function

Binds to the PU-box, a purine-rich DNA sequence (5'-GAGGAA- 3') that can act as a lymphoid-specific enhancer. This protein is a transcriptional activator that may be specifically involved in the differentiation or activation of macrophages or B-cells. Also binds RNA and may modulate pre-mRNA splicing.

Cellular Location

Nucleus.

**Sfp1 Antibody - N-terminal region -
Protocols**

Provided below are standard protocols that you may find useful for product applications.

- [Western Blot](#)
- [Blocking Peptides](#)
- [Dot Blot](#)
- [Immunohistochemistry](#)
- [Immunofluorescence](#)
- [Immunoprecipitation](#)
- [Flow Cytometry](#)
- [Cell Culture](#)