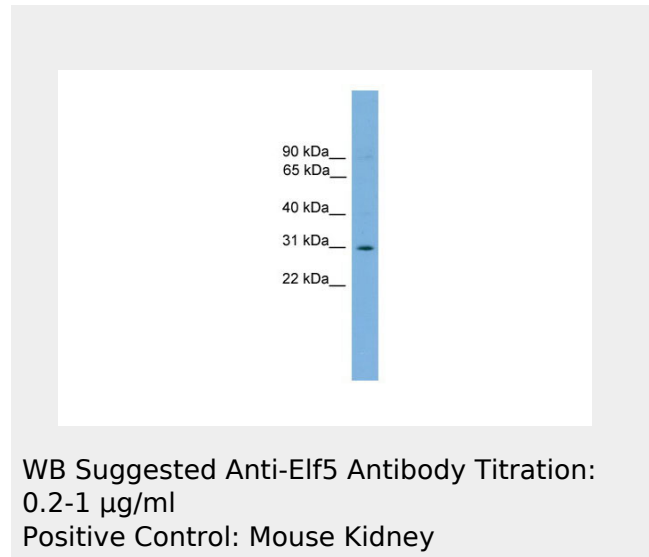


Elf5 antibody - middle region
Rabbit Polyclonal Antibody
Catalog # AI11106

Specification

Elf5 antibody - middle region - Product Information

Application	WB
Primary Accession	Q8VDK3
Other Accession	NM_010125 , NP_034255
Reactivity	Human, Mouse, Rat, Rabbit, Pig, Horse, Bovine, Dog
Predicted	Human, Mouse, Rat, Rabbit, Pig, Bovine, Dog
Host	Rabbit
Clonality	Polyclonal
Calculated MW	30 KDa



Elf5 antibody - middle region - Additional Information

Gene ID 13711

Alias Symbol **ESE-2, ESE-5.,
ese-5, ESE-5**

Other Names

ETS-related transcription factor Elf-5,
E74-like factor 5, Elf5

Format

Liquid. Purified antibody supplied in 1x PBS buffer with 0.09% (w/v) sodium azide and 2% sucrose.

Reconstitution & Storage

Add 50 ul of distilled water. Final anti-Elf5 antibody concentration is 1 mg/ml in PBS buffer with 2% sucrose. For longer periods of storage, store at 20°C. Avoid repeat freeze-thaw cycles.

Precautions

Elf5 antibody - middle region is for research use only and not for use in diagnostic or therapeutic procedures.

Elf5 antibody - middle region - Protein Information**Name** Elf5**Function**

Transcriptionally activator that may play a role in regulating the later stages of keratinocytes terminal differentiation (By similarity). Binds to DNA sequences containing the consensus nucleotide core sequence GGA[AT]. Transcriptionally activates the TK promoter.

Cellular Location

Nucleus

{ECO:0000255|PROSITE-ProRule:PRU00237 }.

Tissue Location

Expressed in lung, kidney, stomach, brain, ovaries, tongue, bladder and mammary glands.

Elf5 antibody - middle region - Protocols

Provided below are standard protocols that you may find useful for product applications.

- [Western Blot](#)
- [Blocking Peptides](#)
- [Dot Blot](#)
- [Immunohistochemistry](#)
- [Immunofluorescence](#)
- [Immunoprecipitation](#)
- [Flow Cytometry](#)
- [Cell Culture](#)