

CACNB4 antibody - middle region
Rabbit Polyclonal Antibody
Catalog # AI11025

Specification

CACNB4 antibody - middle region - Product Information

Application **WB**
 Primary Accession [A7BJ74](#)
 Other Accession [NM_000726](#),
[NP_001139270](#)
 Reactivity **Human, Mouse, Rat, Rabbit, Zebrafish, Pig, Horse, Bovine, Dog**
 Predicted **Mouse, Rat, Rabbit, Zebrafish, Chicken, Dog**
 Host **Rabbit**
 Clonality **Polyclonal**
 Calculated MW **50kDa KDa**

CACNB4 antibody - middle region - Additional Information

Alias Symbol **EA5, EJM, CAB4, EIG9, EJM4, EJM6, CACNLB4**

Format

Liquid. Purified antibody supplied in 1x PBS buffer with 0.09% (w/v) sodium azide and 2% sucrose.

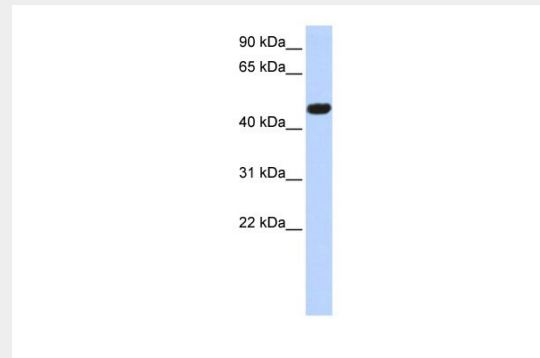
Reconstitution & Storage

Add 50 ul of distilled water. Final anti-CACNB4 antibody concentration is 1 mg/ml in PBS buffer with 2% sucrose. For longer periods of storage, store at 20°C. Avoid repeat freeze-thaw cycles.

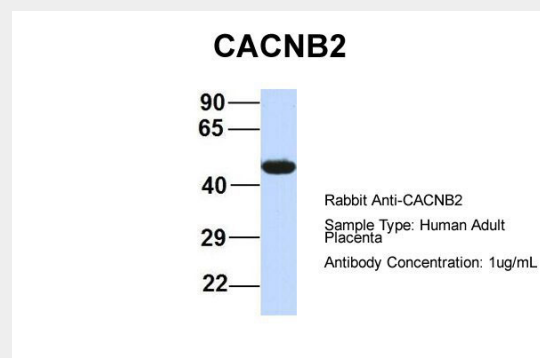
Precautions

CACNB4 antibody - middle region is for research use only and not for use in diagnostic or therapeutic procedures.

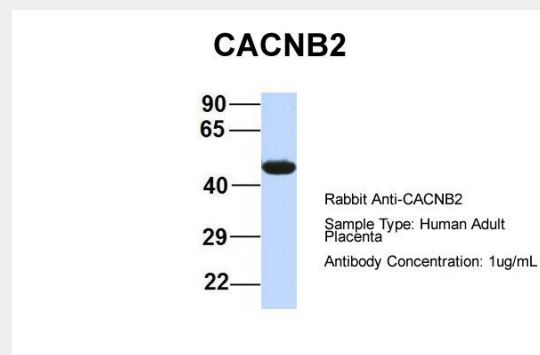
CACNB4 antibody - middle region - Protein Information



WB Suggested Anti-CACNB4 Antibody Titration: 0.2-1 µg/ml
 ELISA Titer: 1:312500
 Positive Control: MCF7 cell lysate



Host:Rabbit
 Target Name:CACNB2
 Sample Tissue:Human Adult Placenta
 Antibody Dilution: 1.0µg/ml



Host:Rabbit

**CACNB4 antibody - middle region -
Protocols**

Target Name: CACNB2
Sample Tissue: Human Adult Placenta
Antibody Dilution: 1.0µg/ml

Provided below are standard protocols that you may find useful for product applications.

- [Western Blot](#)
- [Blocking Peptides](#)
- [Dot Blot](#)
- [Immunohistochemistry](#)
- [Immunofluorescence](#)
- [Immunoprecipitation](#)
- [Flow Cytometry](#)
- [Cell Culture](#)