

**DDX39 antibody - N-terminal region**  
**Rabbit Polyclonal Antibody**  
**Catalog # AI10973**

**Specification**

**DDX39 antibody - N-terminal region - Product Information**

Application **WB**  
Primary Accession [O00148](#)  
Other Accession [NM\\_005804](#),  
[NP\\_005795](#)  
Reactivity **Human, Mouse, Rat, Bovine, Dog**  
Predicted **Human, Mouse, Pig**  
Host **Rabbit**  
Clonality **Polyclonal**  
Calculated MW **47kDa KDa**

**DDX39 antibody - N-terminal region - Additional Information**

**Gene ID 10212**

Alias Symbol **BAT1, DDXL, BAT1L, DDX39, URH49**

**Other Names**

ATP-dependent RNA helicase DDX39A, 3.6.4.13, DEAD box protein 39, Nuclear RNA helicase URH49, DDX39A, DDX39

**Format**

Liquid. Purified antibody supplied in 1x PBS buffer with 0.09% (w/v) sodium azide and 2% sucrose.

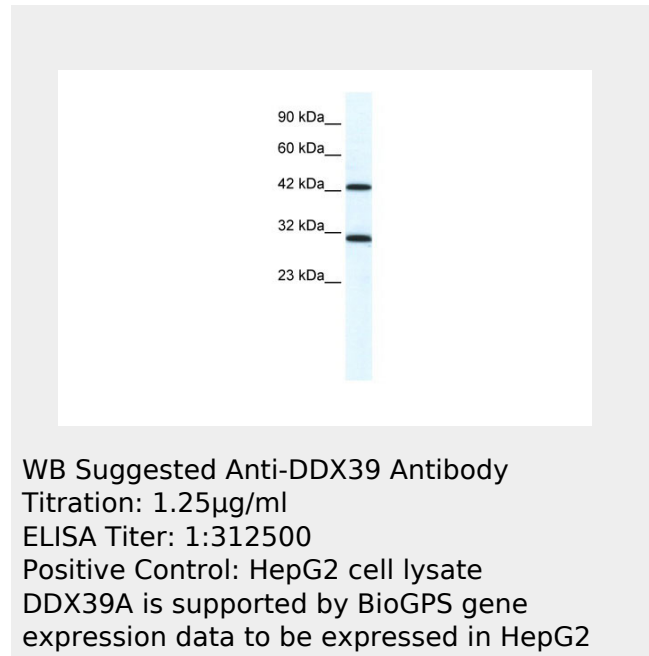
**Reconstitution & Storage**

Add 100 ul of distilled water. Final anti-DDX39 antibody concentration is 1 mg/ml in PBS buffer with 2% sucrose. For longer periods of storage, store at 20°C. Avoid repeat freeze-thaw cycles.

**Precautions**

DDX39 antibody - N-terminal region is for research use only and not for use in diagnostic or therapeutic procedures.

**DDX39 antibody - N-terminal region - Protein**



**DDX39 antibody - N-terminal region - References**

Pryor, A., et al., (2004) Nucleic Acids Res. 32 (6), 1857-1865  
Reconstitution and Storage: For short term use, store at 2-8°C up to 1 week. For long term storage, store at -20°C in small aliquots to prevent freeze-thaw cycles.  
Publications: Majerciak, V., Deng, M. & Zheng, Z.-M. Requirement of UAP56, URH49, RBM15, and OTT3 in the expression of Kaposi sarcoma-associated herpesvirus ORF57. Virology 407, 206-12 (2010). WB, Human, Mouse, Rat, Dog, Guinea pig, Bovine 20828777

**Information****Name** DDX39A**Synonyms** DDX39**Function**

[Isoform 1]: Involved in pre-mRNA splicing. Required for the export of mRNA out of the nucleus.

**Cellular Location**

Nucleus. Cytoplasm. Note=Can translocate to the cytoplasm in the presence of MX1

**Tissue Location**

Detected in testis, and at lower levels in brain, kidney, lung, thymus, spleen and salivary gland

**DDX39 antibody - N-terminal region -  
Protocols**

Provided below are standard protocols that you may find useful for product applications.

- [Western Blot](#)
- [Blocking Peptides](#)
- [Dot Blot](#)
- [Immunohistochemistry](#)
- [Immunofluorescence](#)
- [Immunoprecipitation](#)
- [Flow Cytometry](#)
- [Cell Culture](#)