

TRIM17 antibody - C-terminal region
Rabbit Polyclonal Antibody
Catalog # AI10685

Specification

TRIM17 antibody - C-terminal region - Product Information

Application	WB
Primary Accession	Q9Y577
Other Accession	NM_001024940 , NP_001020111
Reactivity	Human
Predicted	Human
Host	Rabbit
Clonality	Polyclonal
Calculated MW	54kDa KDa

TRIM17 antibody - C-terminal region - Additional Information

Gene ID 51127

Alias Symbol **RBCC, terf, RNF16**
Other Names
E3 ubiquitin-protein ligase TRIM17, 6.3.2.-, RING finger protein 16, Testis RING finger protein, Tripartite motif-containing protein 17, TRIM17, RBCC, RNF16, TERF

Format

Liquid. Purified antibody supplied in 1x PBS buffer with 0.09% (w/v) sodium azide and 2% sucrose.

Reconstitution & Storage

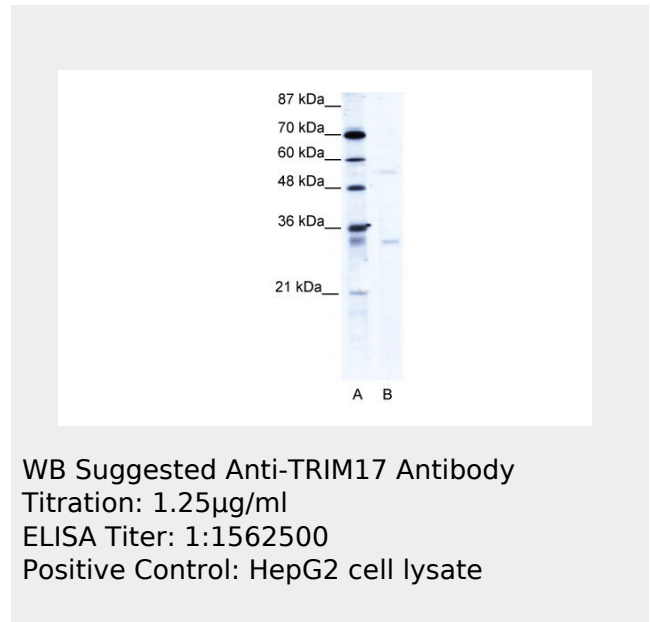
Add 100 ul of distilled water. Final anti-TRIM17 antibody concentration is 1 mg/ml in PBS buffer with 2% sucrose. For longer periods of storage, store at 20°C. Avoid repeat freeze-thaw cycles.

Precautions

TRIM17 antibody - C-terminal region is for research use only and not for use in diagnostic or therapeutic procedures.

TRIM17 antibody - C-terminal region - Protein Information

Name TRIM17



TRIM17 antibody - C-terminal region - References

Reymond,A., et al., (2001) EMBO J. 20 (9), 2140-2151
Reconstitution and Storage: For short term use, store at 2-8C up to 1 week. For long term storage, store at -20C in small aliquots to prevent freeze-thaw cycles.

Synonyms RBCC, RNF16, TERF

Function

May function as a ubiquitin E3 ligase.

Tissue Location

Almost exclusively in the testis.

**TRIM17 antibody - C-terminal region -
Protocols**

Provided below are standard protocols that you may find useful for product applications.

- [Western Blot](#)
- [Blocking Peptides](#)
- [Dot Blot](#)
- [Immunohistochemistry](#)
- [Immunofluorescence](#)
- [Immunoprecipitation](#)
- [Flow Cytometry](#)
- [Cell Culture](#)