

**RORC antibody - middle region**  
Rabbit Polyclonal Antibody  
Catalog # AI10483

**Specification**

**RORC antibody - middle region - Product Information**

Application **WB**  
Primary Accession [B3KUU9](#)  
Other Accession [NM\\_001001523](#),  
[NP\\_001001523](#)  
Reactivity **Human, Mouse, Rat, Pig, Horse, Bovine**  
Predicted **Human, Mouse, Rat, Bovine**  
Host **Rabbit**  
Clonality **Polyclonal**  
Calculated MW **56kDa KDa**

**RORC antibody - middle region - Additional Information**

Alias Symbol **MGC129539, NR1F3, RORG, RZRG, TOR, RZR-GAMMA**

**Format**

Liquid. Purified antibody supplied in 1x PBS buffer with 0.09% (w/v) sodium azide and 2% sucrose.

**Reconstitution & Storage**

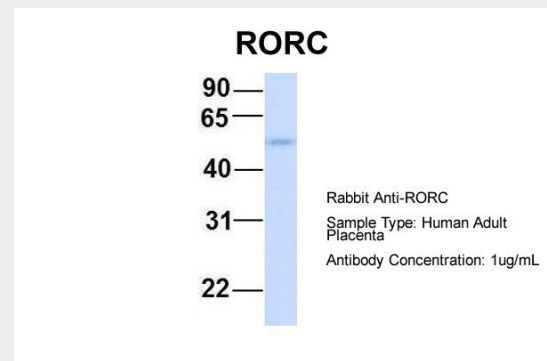
Add 50 ul of distilled water. Final anti-RORC antibody concentration is 1 mg/ml in PBS buffer with 2% sucrose. For longer periods of storage, store at 20°C. Avoid repeat freeze-thaw cycles.

**Precautions**

RORC antibody - middle region is for research use only and not for use in diagnostic or therapeutic procedures.

**RORC antibody - middle region - Protein Information**

**RORC antibody - middle region - Protocols**

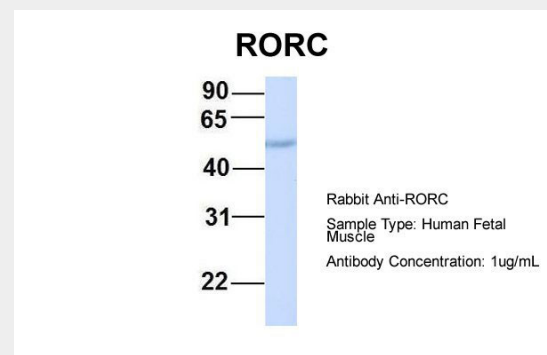


**Host:**Rabbit

**Target Name:**RORC

**Sample Tissue:**Human Adult Placenta

**Antibody Dilution:**1.µg/ml



**Host:**Rabbit

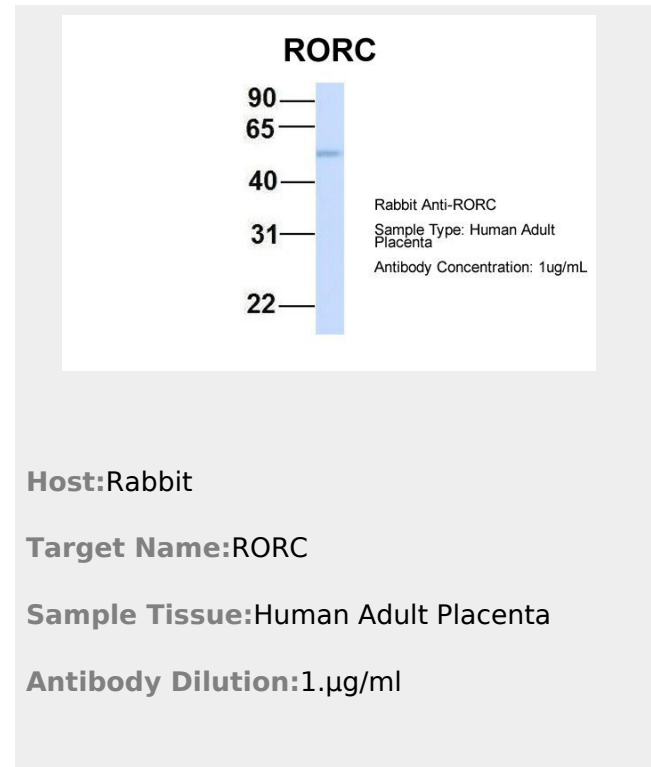
**Target Name:**RORC

**Sample Tissue:**Human Fetal Muscle

**Antibody Dilution:**1.µg/ml

Provided below are standard protocols that you may find useful for product applications.

- [Western Blot](#)
- [Blocking Peptides](#)
- [Dot Blot](#)
- [Immunohistochemistry](#)
- [Immunofluorescence](#)
- [Immunoprecipitation](#)
- [Flow Cytometry](#)
- [Cell Culture](#)



#### **RORC antibody - middle region - References**

Huang,Z., (2007) Expert Opin. Ther. Targets 11 (6), 737-743  
Reconstitution and Storage:For short term use, store at 2-8C up to 1 week. For long term storage, store at -20C in small aliquots to prevent freeze-thaw cycles.