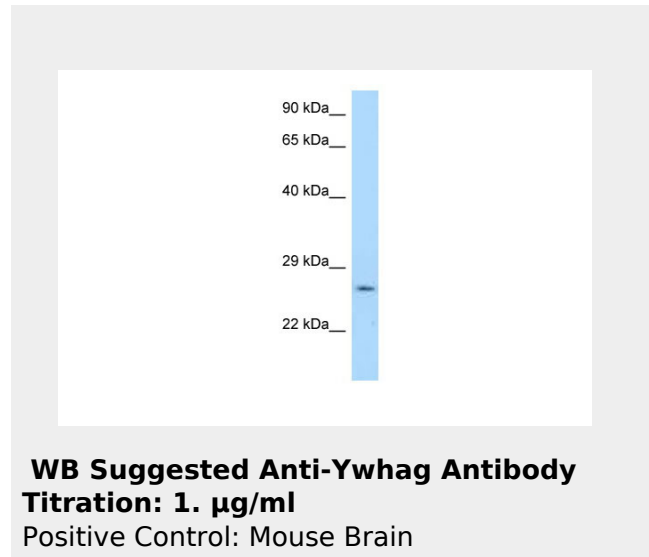


Ywhag antibody - N-terminal region
Rabbit Polyclonal Antibody
Catalog # AI10188

Specification

Ywhag antibody - N-terminal region - Product Information

Application	WB
Primary Accession	P61982
Other Accession	NM_018871 , NP_061359
Reactivity	Human, Mouse, Rat, Zebrafish, Pig, Horse, Bovine, Dog
Predicted	Human, Mouse, Zebrafish, Chicken, Bovine, Dog
Host	Rabbit
Clonality	Polyclonal
Calculated MW	28kDa KDa



Ywhag antibody - N-terminal region - Additional Information

Gene ID 22628

Alias Symbol **14-3-3gamma, D7Bwg1348e**

Other Names

14-3-3 protein gamma, 14-3-3 protein gamma, N-terminally processed, Ywhag

Format

Liquid. Purified antibody supplied in 1x PBS buffer with 0.09% (w/v) sodium azide and 2% sucrose.

Reconstitution & Storage

Add 50 ul of distilled water. Final anti-Ywhag antibody concentration is 1 mg/ml in PBS buffer with 2% sucrose. For longer periods of storage, store at 20°C. Avoid repeat freeze-thaw cycles.

Precautions

Ywhag antibody - N-terminal region is for research use only and not for use in diagnostic or therapeutic procedures.

Ywhag antibody - N-terminal region - Protein Information**Name** Ywhag**Function**

Adapter protein implicated in the regulation of a large spectrum of both general and specialized signaling pathways. Binds to a large number of partners, usually by recognition of a phosphoserine or phosphothreonine motif. Binding generally results in the modulation of the activity of the binding partner.

Cellular Location

Cytoplasm.

Ywhag antibody - N-terminal region - Protocols

Provided below are standard protocols that you may find useful for product applications.

- [Western Blot](#)
- [Blocking Peptides](#)
- [Dot Blot](#)
- [Immunohistochemistry](#)
- [Immunofluorescence](#)
- [Immunoprecipitation](#)
- [Flow Cytometry](#)
- [Cell Culture](#)