

**Anti-CD20 / MS4A1 (B-Cell Marker) Antibody**  
**Recombinant Rabbit Monoclonal Antibody**  
**Catalog # AH13610****Specification****Anti-CD20 / MS4A1 (B-Cell Marker) Antibody -  
Product Information**

|                   |                        |
|-------------------|------------------------|
| Application       | ,14,3,4,               |
| Primary Accession | <a href="#">P11836</a> |
| Other Accession   | <a href="#">712553</a> |
| Reactivity        | Human                  |
| Host              | Rabbit                 |
| Clonality         | Monoclonal             |
| Isotype           | Rabbit / IgG,<br>kappa |
| Calculated MW     | 33077                  |

**Anti-CD20 / MS4A1 (B-Cell Marker) Antibody -  
Additional Information****Gene ID 931****Other Names**

APY; ATOPY; B-lymphocyte antigen CD20;  
B-lymphocyte cell-surface antigen B1;  
Bp35; Fc epsilon receptor I beta chain; Fc  
Fragment of IgE high affinity I receptor for  
beta polypeptide; FCER1B; High affinity  
immunoglobulin epsilon receptor subunit  
beta; IgE Fc receptor subunit beta; IGEL;  
IGER; IGHER; LEU16; Leukocyte surface  
antigen Leu-16; Ly44; Membrane spanning  
4 domains subfamily A member 2;  
Membrane-spanning 4-domains subfamily A  
member 1 (MS4A1)

**Format**

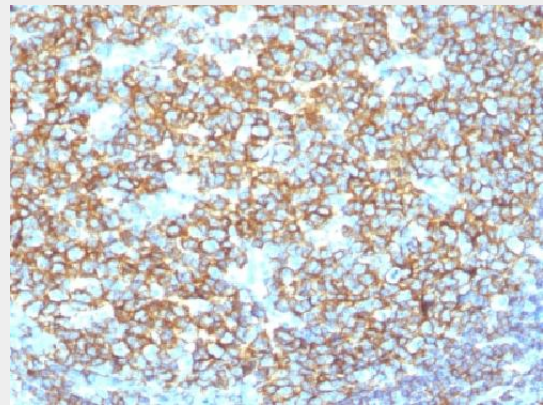
200ug/ml of Ab purified by Protein A  
Column. Prepared in 10mM PBS with 0.05%  
BSA & 0.05% azide. Also available WITHOUT  
BSA & azide at 1.0mg/ml.

**Storage**

Store at 2 to 8°C. Antibody is stable for 24  
months.

**Precautions**

Anti-CD20 / MS4A1 (B-Cell Marker) Antibody  
is for research use only and not for use in  
diagnostic or therapeutic procedures.



Formalin-fixed, paraffin-embedded human  
Tonsil stained with CD20 Recombinant Rabbit  
Monoclonal Antibody (IGEL/1497R)

**Anti-CD20 / MS4A1 (B-Cell Marker)  
Antibody - Background**

Recognizes a protein of 30-33kDa, which is  
identified as CD20. It is a non-Ig differentiation  
antigen of B-cells and its expression is  
restricted to normal and neoplastic B-cells,  
being absent from all other leukocytes and  
tissues. CD20 is expressed by pre B-cells and  
persists during all stages of B-cell maturation  
but is lost upon terminal differentiation into  
plasma cells. This MAAb can be used for  
immunophenotyping of leukemia and  
malignant cells, B lymphocyte detection in  
peripheral blood and B cell localization in  
tissues. It reacts with the majority of B-cells  
present in peripheral blood and lymphoid  
tissues and their derived lymphomas. In  
lymphoid tissue, germinal center blasts and  
B-immunoblasts are particularly reactive. It is a  
reliable antibody for ascribing a B-cell  
phenotype in known lymphoid tissues. Rarely,  
CD20-positive T-cell lymphomas have been  
reported. Reactivity has also been noted with  
Reed-Sternberg cells in cases of Hodgkin s  
disease, particularly of lymphocyte  
predominant type.

**Anti-CD20 / MS4A1 (B-Cell Marker) Antibody - Protein Information****Name** MS4A1**Synonyms** CD20**Function**

B-lymphocyte-specific membrane protein that plays a role in the regulation of cellular calcium influx necessary for the development, differentiation, and activation of B-lymphocytes (PubMed:<a href="http://www.uniprot.org/citations/3925015" target="\_blank">3925015</a>, PubMed:<a href="http://www.uniprot.org/citations/7684739" target="\_blank">7684739</a>, PubMed:<a href="http://www.uniprot.org/citations/12920111" target="\_blank">12920111</a>). Functions as a store-operated calcium (SOC) channel component promoting calcium influx after activation by the B-cell receptor/BCR (PubMed:<a href="http://www.uniprot.org/citations/7684739" target="\_blank">7684739</a>, PubMed:<a href="http://www.uniprot.org/citations/12920111" target="\_blank">12920111</a>, PubMed:<a href="http://www.uniprot.org/citations/18474602" target="\_blank">18474602</a>).

**Cellular Location**

Cell membrane; Multi-pass membrane protein. Cell membrane; Lipid-anchor. Note=Constitutively associated with membrane rafts.

**Tissue Location**

Expressed on B-cells.

**Anti-CD20 / MS4A1 (B-Cell Marker) Antibody - Protocols**

Provided below are standard protocols that you may find useful for product applications.

- [Western Blot](#)
- [Blocking Peptides](#)
- [Dot Blot](#)
- [Immunohistochemistry](#)
- [Immunofluorescence](#)

- [Immunoprecipitation](#)
- [Flow Cytometry](#)
- [Cell Culture](#)